

DEPARTMENT OF THE ARMY TECHNICAL MANUAL

---

DIRECT SUPPORT, GENERAL SUPPORT, AND  
DEPOT MAINTENANCE  
REPAIR PARTS AND SPECIAL TOOLS LIST  
FOR  
PERISCOPE, TANK: M28 (1240.346-8735);  
M28C (1240-706-0794); AND  
M28D (1240-990-1851)

---

HEADQUARTERS, DEPARTMENT OF THE ARMY  
JANUARY 1970

TECHNICAL MANUAL }  
No. 9-1240-239-35P

HEADQUARTERS  
DEPARTMENT OF THE ARMY  
WASHINGTON D. C., 5 January 1970

**DIRECT SUPPORT, GENERAL SUPPORT, AND DEPOT MAINTENANCE  
REPAIR PARTS AND SPECIAL TOOLS LIST  
PERISCOPE, TANK: M28 (12403468735);  
M28C (1240-706-0794); AND  
M28D (124099- 1851)**

Section		Paragraph	Page
I.	INTRODUCTION		
	Scope-----	1	2
	General -----	2	2
	Explanation of columns-----	3	2
	Special information -----	4	3
	How to locate repair parts -----	5	4
	Abbreviations-----	6	4
	Federal supply codes for manufacturers -----	7	5
	Recommendations for maintenance publication improvements-----	8	5
II.	REPAIR PARTS FOR DIRECT SUPPORT, GENERAL SUPPORT, AND DEPOT MAINTENANCE 8		
III.	SPECIAL TOOLS, TEST AND SUPPORT EQUIPMENT FOR DIRECT SUPPORT, GENERAL SUPPORT, AND DEPOT MAINTENANCE		34
IV.	INDEX-FEDERAL STOCK NUMBER AND REFERENCE NUMBER CROSS REFERENCED TO FIGURE AND ITEM NUMBER		43

---

\* This manual supersedes TM 91240-239-35P, 14 February 1961 with Change 1, 24 October 1966

**Section I. INTRODUCTION**

**1. Scope**

This manual lists repair parts, special tools, and equipment required for the performance of direct support, general support, and depot maintenance of the Periscope M28, M28C, and M28D.

**2. General**

This Repair Parts and Special Tools List is divided into the following sections:

a. *Repair Parts-Section II.* A list of repair parts for the performance of maintenance at the direct support, general support, and depot level in figure and item number sequence.

b. *Special Tools, Test and Support Equipment Section III.* A list of special tools, test and support equipment for the performance of maintenance at the direct support, general support, and depot level.

c. *Federal Stock Number and Reference Number Index-Section IV.* A list of Federal Stock Numbers in ascending numerical sequence followed by a list of reference numbers in ascending alpha-numeric sequence, cross-referenced to the illustration figure number and item number.

**3. Explanation of Columns**

The following provides an explanation of columns in the tabular list in Sections II, and III.

a. *Source Maintenance and Recoverability Codes (SMR), Column I:*

(1) Source code indicates the selection status and source for the listed item. Source codes are:

<i>Code</i>	<i>Explanation</i>
P.....	Repair parts, special tools, and test equipment which are stocked in or supplied from the GSA/DSA, or army supply system and authorized for use at indicated maintenance categories.
P2.....	Repair parts, special tools and test equipment which are procured and stocked for insurance purposes because the combat or military essentiality of the end item dictates that a minimum quantity be available in the supply system.
P9.....	Assigned to items which are NSA design controlled: unique repair parts special tools, test, measure and diagnostic equipment, which are stocked and supplied by the Army COMSEC logistic system and which are not subject to the provisions of AR 380-41.
P10.....	Assigned to items which are NSA design controlled ;special tools test, measuring and diagnostic equipment for COMSEC support, which are accountable under the provision of AR 380-41, which are stocked and supplied by the Army COSMEC logistic system.

M Repair parts which are not procured or

<i>Code</i>	<i>Explanation</i>
A	stocked, but are to be manufactured in indicated levels. Assemblies which are not procured or stocked as such, but are made up of two or more units. Such component units carry individual stock numbers and descriptions are procured and stocked separately and can be assembled to form the required assembly at indicated maintenance categories.
X	Parts and assemblies which are not procured or stocked and the mortality of which normally is below that of the applicable end item or component. The failure of such part or assembly should result in retirement of the end item from the supply system.
X1	Repair parts which are not procured or stocked. The requirements for such items will be filled by use of the next higher assembly or component.
X2	Repair parts which are not stocked. The indicated maintenance category requiring such repair parts will attempt to obtain same through cannibalization. Where such repair parts are not obtainable through cannibalization, requirements will be requisitioned with accompanying justification, through normal supply channels.
G	Major assemblies that are procured with PEMA funds for initial issue only as exchange assemblies at DSU and GSU level. These assemblies will not be stocked above DS and GS level or returned to depot supply level. (2) Maintenance code, indicates the lowest category of maintenance authorized to install the listed item. The maintenance level codes are:
	<i>Code</i> <span style="float: right;"><i>Explanation</i></span>
0	Organizational maintenance.
F	Direct support maintenance.
H	General support maintenance.
D	Depot maintenance.
	(3) Recoverability code, indicates whether unserviceable items should be returned for recovery or salvage. Items not coded are expendable. Recoverability codes are:
	<i>Code</i> <span style="float: right;"><i>Explanation</i></span>
R	Applied to repair parts (assemblies and components) which are considered economically repairable at direct and general support maintenance levels. When the maintenance capability to repair these items does not exist they are normally disposed of at the GS level.

<i>Code</i>	<i>Explanation</i>
	When supply considerations dictate some of these spare parts may be listed for automatic return to supply for depot level repair as set forth in AR 71060. When so listed, they will be replaced by supply on an exchange basis.
S.....	Repair parts and assemblies which are economically repairable at DSU and GSU activities and which normally are furnished by supply on an exchange basis.... When items are determined by GSU to be uneconomically repairable, they will be evacuated to a depot for evaluation and analysis before final disposition.
T.....	High dollar value recoverable repair parts which are subject to special handling and are issued on an exchange basis. Such repair parts normally are repaired or overhauled at depot maintenance activities.
U.....	Repair parts specifically selected for salvage by reclamation units because of precious metal content, critical materials or high dollar value reusable casings or castings.

*b. Federal Stock Number, Column 2.* This column indicates the Federal stock number assigned to the item and will be used for requisitioning purposes.

*c. Description, Column 3.* This column indicates the Federal item name and any additional description of the item required. The abbreviation "w/e" when used as a part of the nomenclature indicates the Federal stock number includes all armament, equipment accessories, and repair parts issued with the item. A part number or other reference number is followed by the applicable five-digit Federal supply code for manufacturer in parentheses.

*d. Unit of Measure (U/M), Column 4.* A 2 character alphabetic abbreviation indicating the amount or quantity of the item upon which the allowances are based e.g., ft, ea, pr, etc.

*e. Quantity Incorporated in Unit, Column 5.* This column indicates the quantity of the item used in the assembly group. A "V" appearing in this column in lieu of a quantity indicates that a definite quantity cannot be indicated (e.g., shims, spacers, gaskets, etc.).

*f. 30-Day DS/GS Maintenance Allowances, Columns 6, and 7.*

*Note:* Allowances in GS column are for GS maintenance only.

(1) The allowance columns are divided into three subcolumns. Indicated in each subcolumn, opposite the first appearance of each item is the total

quantity of items authorized for the number of equipments supported. Subsequent appearances of the same item will have the letters "REF" in the applicable allowance columns. Items authorized for use as required but not for initial stockage are identified with an asterisk in the allowance column.

(2) The quantitative allowances for DS/GS levels of maintenance will represent initial stockage for a 30-day period for the number of equipments supported.

(3) Determination of the total quantity of parts required for maintenance of more than 100 of these equipments can be accomplished by converting the equipment quantity to a decimal factor by placing a decimal point before the next to last digit of the number to indicate hundredths, and multiplying the decimal factor by the parts quantity authorized in the 51-100 allowance column. Example, authorized allowance for 51-100 equipments is 40; for 150 equipments multiply 40 by 1.50 or 60 parts required.

*g. 1-Year Allowances Per 100 Equipments/Contingency Planning Purposes, Column 8.* This column indicates opposite the first appearance of each item the total quantity required for distribution and contingency planning purposes. The range of items indicates total quantities of all authorized items required to provide for adequate support of 100 equipments for one year.

*h. Depot Maintenance Allowance Per 100 Equipments, Column 9.* This column indicates opposite the first appearance of each item the total quantity authorized for depot maintenance of 100 equipments. Subsequent appearances of the same item will have the letters "REF" in the allowance column. Items authorized for use as required but not for initial stockage are identified with an asterisk in the allowance column.

*i. Illustration, Column 10.* This column is divided as follows:

(1) Figure Number, Column 10a. Indicates the figure number of the illustration in which the item is shown.

(2) Item Number, Column 10b. Indicates the callout number used to reference the item in the illustration.

#### 4. Special Information

a. Identifications of the usable on codes included in column 3 of this publication are:

<i>Code</i>	<i>Used on</i>
A	Model M28
B	Model M28C
C	Model M28D

b. Periscope Tank M28 is used with: Carrier, Periscope M59 w/M13 Cupola Mortar, Self-propelled 42 in. M84 Tank 90mm Gun M48A1, and M48A2	
c. Periscope Tank M28C is used with: Car, Armored, Light XM706, and SM706E1 Tank 90mm Gun M48A2C, and M48A3 Conventional and Infra Red Tank 105mm Gun M60 (Conventional only) M60A1 (Conventional only) Tank, Flame Thrower M67A1 and M67A2.	
d. Periscope Tank M28D is used with: Flame Thrower Self-propelled M132, and M132A1	
e. Action change codes indicated in the left hand margin of the listing page denote the following: N-Indicates an added item not included in previous publications C-Indicates a change in data F-Indicates a change in FSN only	
f. The following publications pertain to Periscope, Tank: M28 series and their components M48A1 Tank TM 9-7012	Operator and Organiza- tional Maintenance Manual
SM ORD 7 G-254	Organizational Mainte- nance Allowance
M48A2 Tank and M67A1 TM 9-7022	Flame Thrower Operator and Organiza- tional Maintenance Manual
M59 Carrier and M84 Mortar TM 9-2300-203-12	Operator and Organiza- tional Maintenance Manual
TM 9-2300-203-20P	Organizational Mainte- nance Repair Parts and Special Tools List
M48A2, M48A2C Tank and M167A1 Flame Thrower TM 2350-208-20P	Organizational Mainte- nance Repair Parts and Special Tools List
M48A3 Tank TM 9-2350-224-10 TM 9-2350-224-20	Operator's Manual Organizational Mainte- nance Manual
TM 9-2350-224-25P	Organizational, Direct Support, General Support, and Depot Maintenance Repair Parts and Special Tools List

M60, and M60A1 Tank TM 9-2350-215-10 TM 9-2350-215-20	Operator's Manual Organizational Mainte- nance Manual
TM 9-2350-215-20P	Organizational Mainte- nance Repair Parts and Special Tools List
XM706, and XM706E1 Armored Car TM 9-2320-245-20P	Organizational Mainte- nance Repair Parts and Special Tools List
M132A1 Flame Thrower TM 9-2300-20/2/1	Organizational Mainte- nance Manual
M132, and M132A1 Flame Thrower TM 9-2300-224-20P/3	Organizational Mainte- nance Repair Parts and Special Tools List
TM 9-2300-224-10/3/4	Operator's Manual
M132 Flame Thrower TM 9-2300-224-20	Organizational Mainte- nance Manual

## 5. How to Locate Repair Parts

a. When Federal stock number or reference number is unknown:

(1) *First.* Find the illustration covering the assembly group to which the repair part belongs.

(2) *Second.* Identify the repair part on the illustration and note the illustration figure and item number of the repair part.

(3) *Third.* Using the Repair Parts Listing, find the assembly group to which the repair part belongs and locate the illustration figure and item number noted on the illustration.

b. When Federal stock number or reference number is known:

(1) *First.* Using the Index of Federal Stock Numbers and Reference Numbers find the pertinent Federal stock number or reference number. This index is in ascending FSN sequence followed by a list of reference numbers in ascending alphanumeric sequence, cross-referenced to the illustration figure number and item number.

(2) *Second.* Using the Repair Part Listing, find the assembly group of the repair part and the illustration figure number and item number referenced in; the Index of Federal Stock Numbers and Reference Numbers.

## 6. Abbreviations

<i>Abbreviations</i>	<i>Explanation</i>
al-----	aluminum
aly-----	alloy

<i>Abbreviations</i>	<i>Explanation</i>
cd pl-----	cadmium plate
cham-----	chamfer
cl-----	close
cmpd-----	compound
cop-----	copper
cp-----	cone point
cres-----	corrosion-resistant steel
cs-----	carbon steel
ctsk-----	countersunk
dia-----	diameter
dr-----	drill
fern-----	female
fl-----	flat
fnsh-----	finish
gl-----	glass
gra-----	gray
hc-----	high carbon
hd-----	head
hdls-----	headless
hex-----	hexagon
hex soc-----	hexagonal socket
hlcl-----	helical
id-----	inside diameter
in-----	inch
int-----	integral
l-----	long
lh-----	left hand
muw-----	music wire
nc-----	national coarse (thread)
nf-----	national fine (thread)
no-----	number
ns-----	national special (thread)
nyl-----	nylon
od-----	outside diameter
opt-----	optical
pl-----	plate (d)
pneu-----	pneumatic
pnh-----	pan head
prcn-----	precision
psvt-----	passivate
pt-----	point
rbr-----	rubber
rec-----	recessed
rh-----	right hand
shk-----	shank

<i>Abbreviations</i>	<i>Explanation</i>
skt-----	socket
sltd-----	slotted
smls-----	seamless
spcl-----	special
spr-----	spring
stl-----	steel
tbg-----	tubing
thd-----	thread
thk-----	thick
unc-----	unified coarse thread
unf-----	unified fine thread
w-----	wide
w-----	wire (comb form)
wnd-----	wound

## 7. Federal Supply Codes for Manufacturers

<i>Code</i>	<i>Manufacturer</i>
19200	Frankford Arsenal, Philadelphia, Pa.
19207	Army Tank-Automotive Center Warren, Michigan
21450	Ordnance Corps Engineering Standards Rock Island Arsenal, Rock Island, Illinois
40920	MPB Corp Precision Park, Keene, N.H. 03431
43334	New Departure-Hyatt Bearings Division General Motors Corp. Hayes Avenue, Sandusky, Ohio 44870
96906	Military Standards Promulgated by Standardization Division, Directorate of Logistic Services DSA

## 8. Recommendations for Maintenance Publication Improvements

Report of errors, omissions, and recommendations for improving this publication by the individual user is encouraged. Reports should be submitted on DA Form 2028 (Recommended Changes to DA Publications) and forwarded direct to the Commanding Officer, Frankford Arsenal, ATTN: AMSWN'E-SMF-WN'3100, Philadelphia, Pa. 19137.

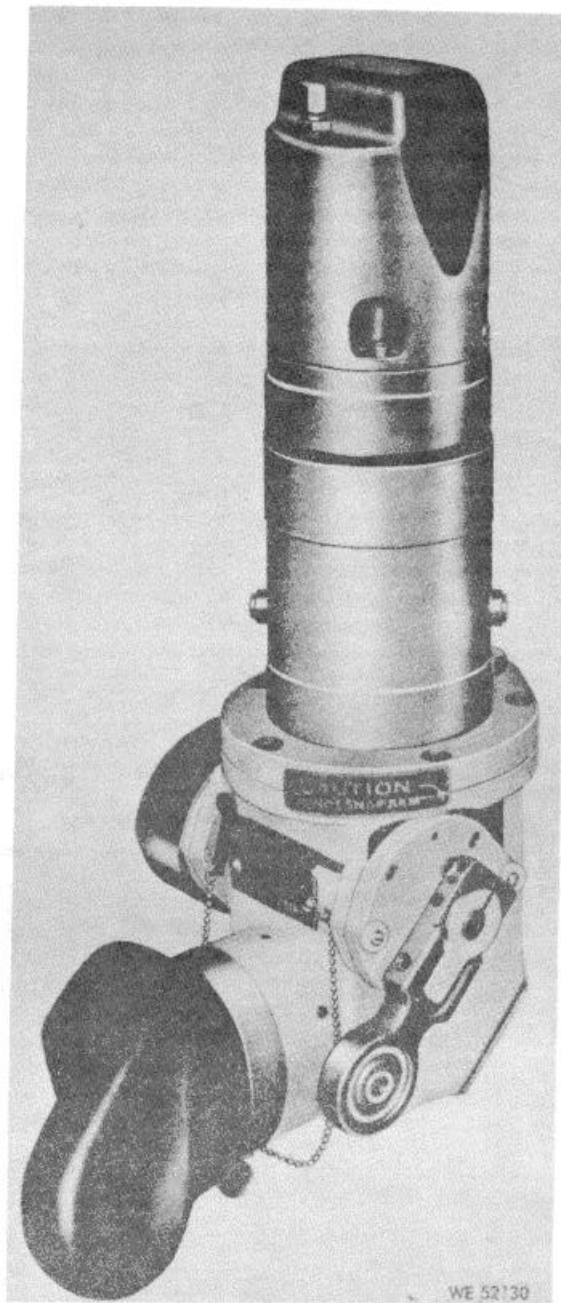


Figure 1. Sight, Periscope M28 (8270601), M28C (8293432), or M28D (8565458) w/right hand elevation assembly.

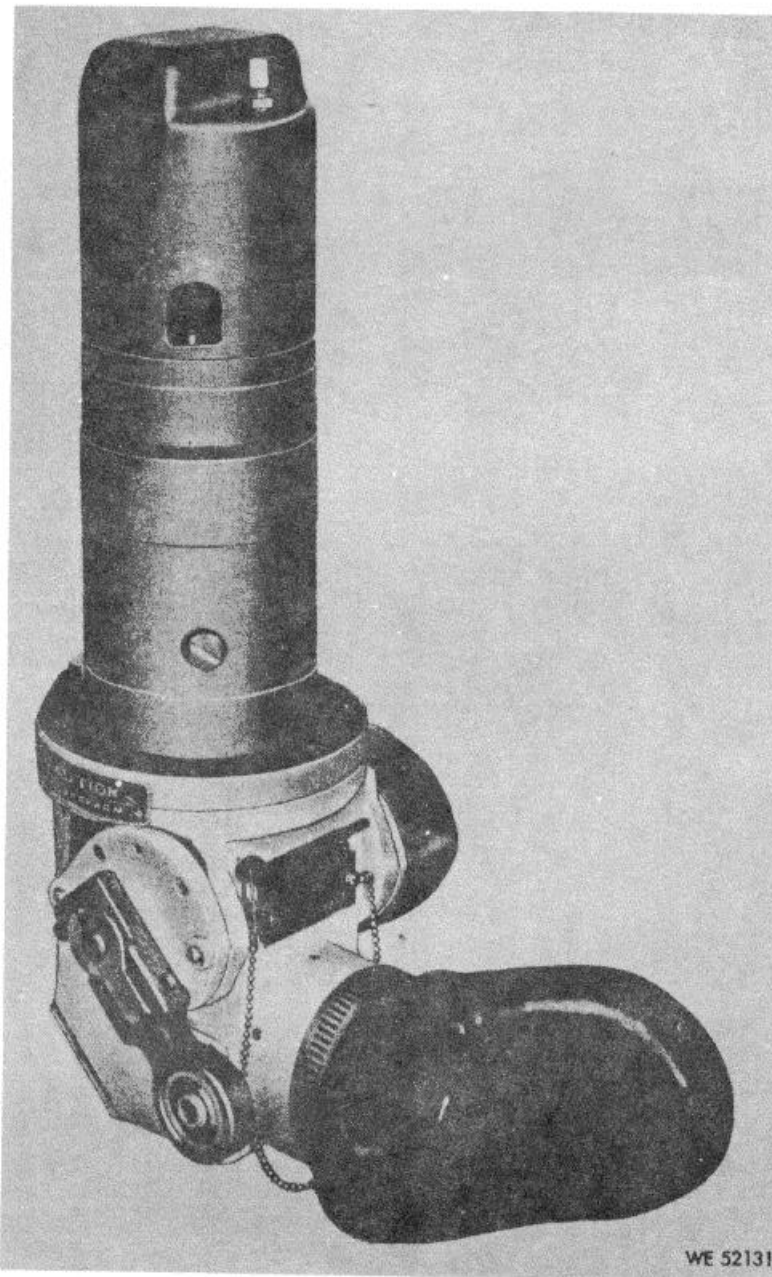


Figure 2. Sight, periscope, M28C (829S432)-w left hand elevation assembly.



**Section II. REPAIR PARTS FOR DIRECT SUPPORT, GENERAL SUPPORT and DEPOT MAINTENANCE**

ACT ON CODE	(1) SOURCE MAINT AND RECOV CODE			(2)  FEDERAL STOCK NO.	(3)  DESCRIPTION  Reference Number & Mfr Code    Usable On Code	(4)  UNIT OF MEAS.	(5)  QTY INC IN UNIT	(6) 30-DAY OS MAINT ALLOWANCE			(7) 30-DAY GS MAINT ALLOWANCE			(8)  1-YR ALW PER 100 EQUIP CNTGCTY	(9)  DEPOT MAINT ALW PER 100 EQUIP	(10) ILLUSTRATION	
	(a)	(b)	(c)					(a)	(b)	(c)	(a)	(b)	(c)			(a)	(b)
	Source	Maint	Recov					1-20	21-50	51-100	1-20	21-50	51-100			FIG. NO.	ITEM NO.
N	P-	F-	-	2640-222-4525	<b>SIGHT, PERISCOPE, M28 (8270601), M28C (8293432) OR M28D (8565458)</b>  CAP (AIR VALVE) MS20813-1 (96906)	EA	1	*	2	2	*	2	2	24	10	3	1
N	P-	F-	-	2640-060-3543	VALVE CORE PNUE TIRE, SHORT CORE, .876 L MS51377-2 (96906)	EA	1	*	2	2	*	2	2	24	10	3	2
N	P-	F-	-	2640-114-1096	VALVE STEM, PURGING CRES, 7/16 HEX, 1-1/32 L MS51607-1 (96906)	EA	1	*	2	2	*	2	2	24	10	3	3
N	P-	F-	-	1240-464-4792	STRAP, VALVE CAP NYL, GRA, .030 THK 10516567 (19200)	EA	1	*	2	2	*	2	2	24	10	3	4
N	P-	F-	-	5305-978-9348	SCREW, CAP, SOCKET HEAD STL, CD PL, NO 6 32UNC-3A, 1/2 L MS16997-20 (96906)	EA	4	*	2	2	*	2	2	24	10	3	5
N	X-	-	-		CAP (CEMENTED) 8270653 (19200)	---	1	--	--	--	--	--	--	--	--	3	6
N	P-	F-	-	5305-764-2966	SCREW, MACHINE FL CTSK HD, CROSS REC, CRES, PSVT FNH, NO 2 56UNC-2A, 3/16 L MS51959-2 (96906)	EA	4	*	2	2	*	2	2	24	10	3	7
N	X-	-	-		CLAMP 7660650 (19200)	---	2	--	--	--	--	--	--	--	--	3	8
C	P-	F-	-	1240-346-8740	WINDOW OPT GL, 1.26 W, 2.485 L, 0.197 THK 8270604 (19200)	EA	1	*	*	2	*	*	2	24	5	3	9
N	X-	-	-		CAP 8270624 (19200)	---	1	--	--	--	--	--	--	--	--	3	10
N	X-	-	-		SCREW, MACHINE PNH, CROSS REC, CRES, PSVT FNH, NO 6 32UNC-2A, 7/8 L MS51957-33 (96906)	---	1	--	--	--	--	--	--	--	--	3	11
N	X-	-	-		CLAMP 8270700 (19200)	---	1	--	--	--	--	--	--	--	--	3	12

N	X-	-		SCREW, MACHINE FL HD, CRES, PSVT FNSH, NO 8 32NC-2A, 9/16 L 426887 (96906)	---	3	--	--	--	--	--	--	--	3	13		
N	X1-	-		CELL ASSEMBLY 8270631 (19200)	---	1	--	--	--	--	--	--	--	3	14		
N	P-	H-	5315-822-1180	PIN, STRAIGHT, HEADLESS CRES, PSVT FNSH, 1/8 DIA, 1/2 L MS16555-27 (96906)	EA	6	--	--	--	2	2	2	24	20	3	15	
C	P-	F-	-	1240-346-8203	PIN 8567526 (19200)	EA	2	*	2	2	*	2	2	24	10	3	16
C	P-	F-	-	1240-346-8203	PIN 8567526 (19200) (See Fig. 3, Item 16 for Allowances)	EA	REF	REF	REF	REF	REF	REF	REF	--	REF	3	17
C	P-	O-	-	5340-535-6924	CLAMP, LOOP 8270676 (19200)	EA	1	*	*	2	*	*	2	24	5	3	18
C	P-	O-	-	1240-535-6925	EYESHIELD (MOLDED) 8270683 (19200)	EA	1	*	*	2	*	*	2	24	5	3	19
N	X1	-	-		ADAPTER 8270708 (19200)	---	1	--	--	--	--	--	--	--	3	20	
N	P-	H-	-	7690-877-7156	DECAL 7659440 (19200)	EA	1	--	--	--	*	2	4	48	30	3	21

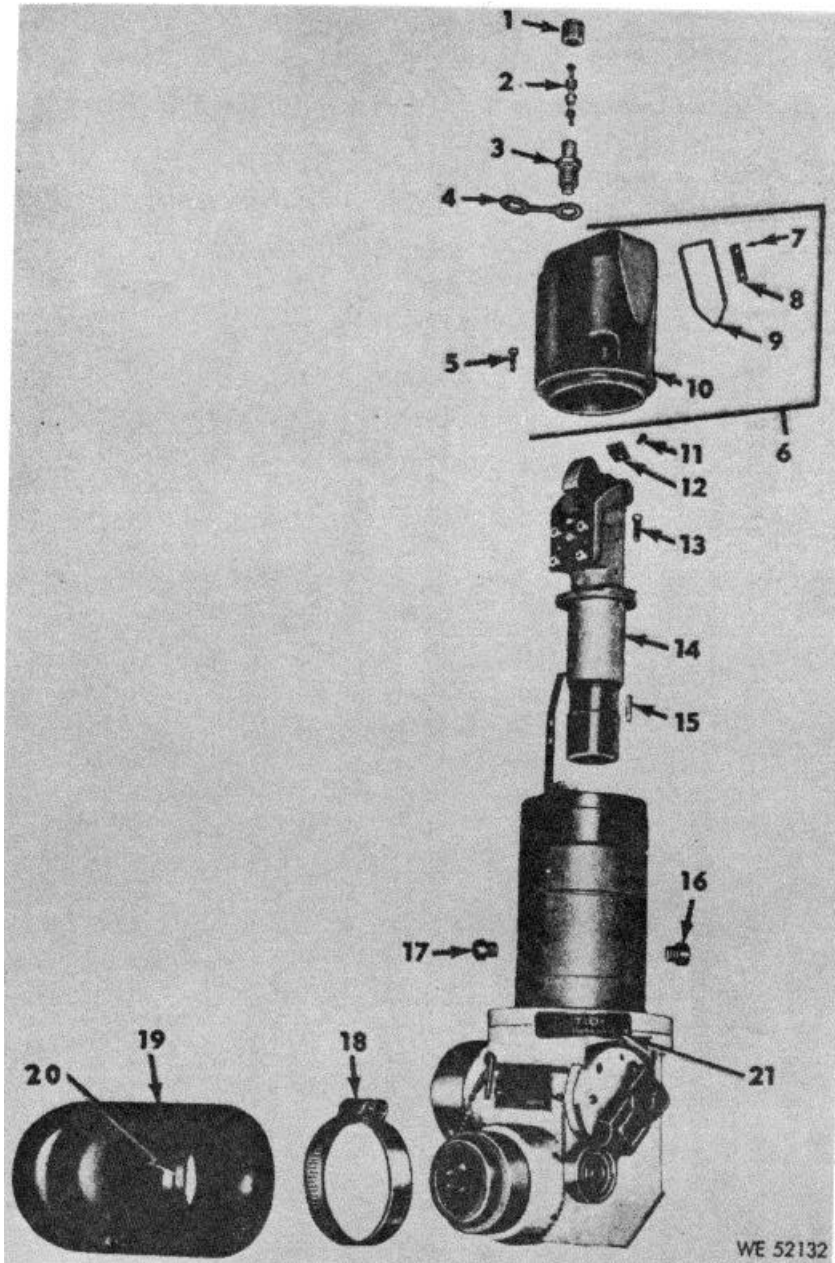


Figure 3. Sight, periscope M28, (8270601), M28C (8293452), or M28D (8565458) -partial exploded view.

ACT ON CODE	(1) SOURCE MAINT AND RECOV CODE			(2)  FEDERAL STOCK NO.	(3)  DESCRIPTION  Reference Number & Mfr Code Usable On Code	(4)  UNIT OF MEAS.	(5)  QTY INC IN UNIT	(6) 30-DAY OS MAINT ALLOWANCE			(7) 30-DAY GS MAINT ALLOWANCE			(8)  1-YR ALW PER 100 EQUIP CNTGCTY	(9)  DEPOT MAINT ALW PER 100 EQUIP	(10) ILLUSTRATION	
	(a)	(b)	(c)					(a)	(b)	(c)	(a)	(b)	(c)			(a)	(b)
	Source	Maint	Recov					1-20	21-50	51-100	1-20	21-50	51-100			FIG. NO.	ITEM NO.
					<b>CELL ASSEMBLY 8270631</b>												
N	P-	H-	-	5306-057-1632	SETSCREW HEX SOC, CP CRES, PSVT FNSH, NO 2 64UNF-3A, 1/4 L MS51038-19 (96906)	EA	2	--	--	--	*	2	2	24	10	4	1
C	P-	H-	-	5305-639-4321	SETSCREW HDLS, CRES, NO 10-32NF-2A, 0.58 L 8270678 (19200)	EA	2	--	--	--	*	2	2	24	10	4	2
C	P-	H-	-	1240-535-9618	SPRING W STL, HC FNSH COP PL, 1 1/32 ID, 1 5/16 OD, 0.165 CL WND 8270636 (19200)	EA	1	--	--	--	*	*	2	24	5	4	3
C	P-	H-	-	1240-767-6402	PRISM ASSEMBLY 8270652 (19200)	EA	1	--	--	--	*	*	2	24	5	4	4
N	X	1-	-		SCREW, MACHINE PNH, CROSS REC, CRES, PSVT FNSH, NO 2 56UNC-2A, 1/8 L MS51937-1 (96906)	---	2	--	--	--	--	--	--	--	--	4	5
N	X1	-	-		PIN, STRAIGHT CRES, 1/16 DIA, 15/16 L 8270681 (19200)	---	1	--	--	--	--	--	--	--	--	4	6
N	X1	-	-		SHIELD, LIGHT 7674678 (19200)	---	1	--	--	--	--	--	--	--	--	4	7
N	X1	-	-		RETAINER (LIGHT SHIELD) 8270679 (19200)	---	1	--	--	--	--	--	--	--	--	4	8
N	X1	-	-		BEARING BALL 8270682 (19200)	---	1	--	--	--	--	--	--	--	--	4	9
N	X1	-	-		PRISM, BONDED 8270668 (19200)	---	1	--	--	--	--	--	--	--	--	4	10
N	X1	-	-		PRISM, SCANNING 8270605 (19200)	---	1	--	--	--	--	--	--	--	--	4	11
N	X1	-	-		MOUNT 8270654 (19200)	---	1	--	--	--	--	--	--	--	--	4	12
N	P-	H-	-	5306-978-9369	SCREW, CAP, SOCKET HEAD STL, CD PL, NO 8 82UNC-SA, 8/8 L MS16997-31 (96906)	EA	4	--	--	--	*	2	2	24	10	4	13

ACT ON CODE	(1) SOURCE MAINT AND RECOV CODE			(2)  FEDERAL STOCK NO.	(3)  DESCRIPTION		(4)  UNIT OF MEAS.	(5)  QTY INC IN UNIT	(6) 30-DAY OS MAINT ALLOWANCE			(7) 30-DAY GS MAINT ALLOWANCE			(8)  1-YR ALW PER 100 EQUIP CNTGCV	(9)  DEPOT MAINT ALW PER 100 EQUIP	(10) ILLUSTRATION	
	(a)	(b)	(c)		Reference Number & Mfr Code	Usable On Code			(a)	(b)	(c)	(a)	(b)	(c)			(a)	(b)
	Source	Maint	Recov						1-20	21-50	51-100	1-20	21-50	51-100			FIG. NO.	ITEM NO.
N	X1	-	-	5315-721-4995	SUPPORT CRES PRCN CASTING 7687316 (19200)		---	1	--	--	--	--	--	--	--	4	14	
N	M-	D-			PIN, STRAIGHT, HEADLESS 5 16 DIA, 1 2 L 589928 (21450)		---	1	--	--	--	--	--	--	--	4	15	
N	P-	H-			PIN, STRAIGHT, HEADLESS CRES, .1250 DIA, 1/2 L MS9105-57 (969(6))	EA	---	2	--	--	--	*	2	2	24	10	4	16
N	X1	-	-		SETSCREW HDLS, CUP PT STL, NO 4 40NC-2A, 1/8 L 9400795 (19200)		---	3	--	--	--	--	--	--	--	--	4	17
N	X1	-	-		CELL ASSEMBLY (ERECTOR) 8270650 (19200)		---	1	--	--	--	--	--	--	--	--	4	18
N	X1	-	-		CELL ASSEMBLY 8270649 (19200)		---	1	--	--	--	--	--	--	--	--	4	19

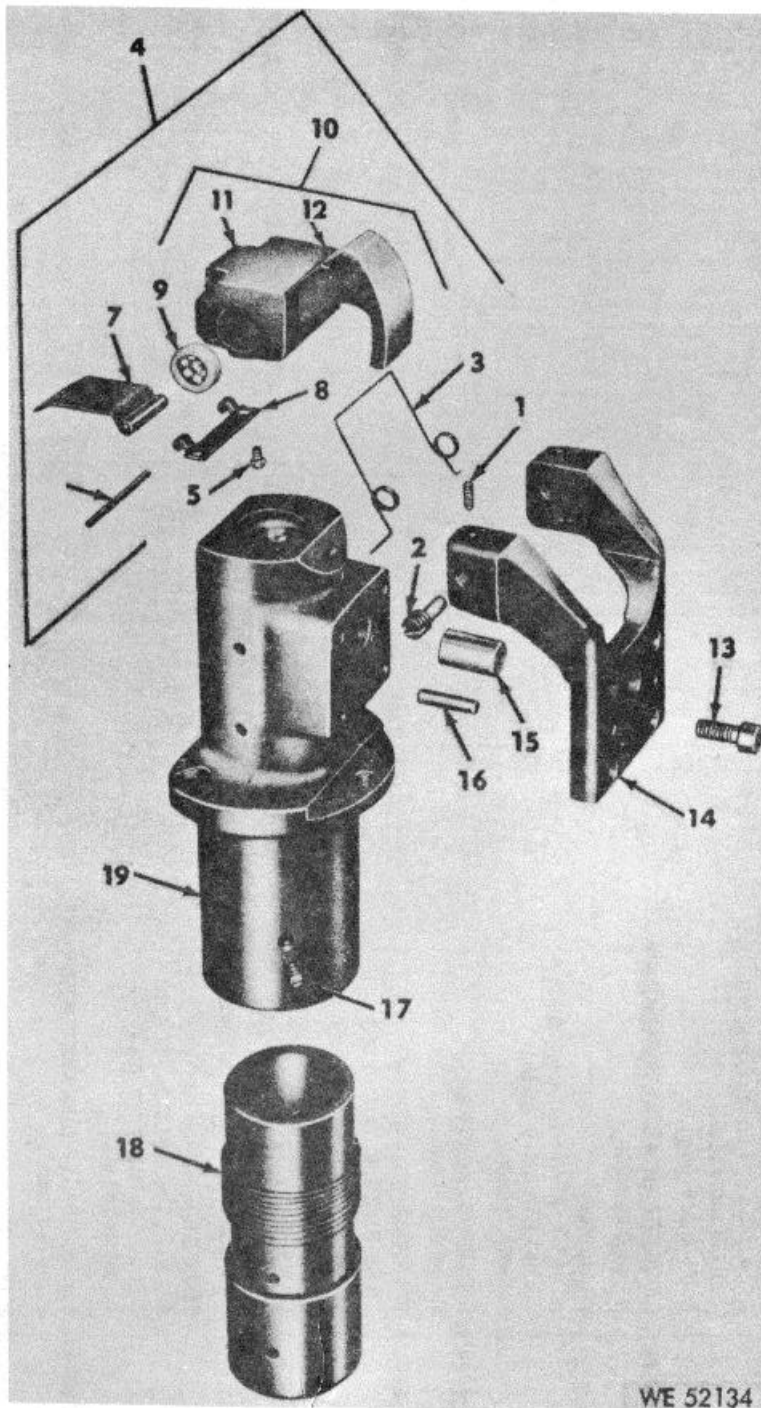


Figure 4. Cell assembly (8270631).

ACT ON CODE	(1) SOURCE MAINT AND RECOV CODE			(2)  FEDERAL STOCK NO.	(3)  DESCRIPTION  Reference Number & Mfr Code Usable On Code	(4)  UNIT OF MEAS.	(5)  QTY INC IN UNIT	(6) 30-DAY OS MAINT ALLOWANCE			(7) 30-DAY GS MAINT ALLOWANCE			(8)  1-YR ALW PER 100 EQUIP CNTGCTY	(9)  DEPOT MAINT ALW PER 100 EQUIP	(10) ILLUSTRATION	
	(a)	(b)	(c)					(a)	(b)	(c)	(a)	(b)	(c)			(a)	(b)
	Source	Maint	Recov					1-20	21-50	51-100	1-20	21-50	51-100			FIG. NO.	ITEM NO.
					<b>CELL ASSEMBLY 8270649</b>												
C	P-	H-		6840-644-4642	RING, EXTERNALLY THREADED AL ALY, 0.910 ID, 1-1/8 82NS-2A OD, 0.140 THK 8270669 (19200)	EA	1	--	--	--	*	*	2	24	10	5	1
C	P-	H-		1240-692-1581	LENS, OPTICAL INSTRUMENT 8270610 (19200)	EA	1	--	--	--	*	2	2	24	5	5	2
N	X1	-	-		SPACER AL ALY TBG, SLTD, 0.908 ID, 1.061 OD, 0.210 THK 8270675 (19200)	---	1	--	--	--	--	--	--	--	--	5	3
C	P-	H-	-	1240-492-16530	LENS, OBJECTIVE 8270609 (19200)	EA	2	--	--	--	*	2	2	24	6	5	4
C	P-	H-	-	5340-505-5301	WASHER, THRUST CRES SLTD, 0.75 ID, 1.063 OD, 0.036 THK 8270674 (19200)	EA	1	--	--	--	*	*	2	24	5	5	5
C	P-	H-		1240-692-1530	LENS, OBJECTIVE 8270609 (19200) (See Fig 5, Item 4 for Allowances)	EA	REF	--	--	--	REF	REF	REF	--	REF	5	6
N	X1	-	-		SPACER AL ALY TBG, SLTD, 0.908 ID, 1.061 OD, 0.218 THK 8270673 (19200)	---	1	--	--	--	--	--	--	--	--	5	7
C	P-	H-		1240-692-1528	LENS, OPTICAL INSTRUMENT 8270608 (19200)	EA	1	--	--	--	*	2	2	24	5	5	8
N	X1	-	-		SPACER AL ALY TBG, SLTD, 0.903 ID, 1.061 OD, 0.234 THK 8270672 (19200)	---	1	--	--	--	--	--	--	--	--	5	9
C	P-	H-	-	1240-692-1627	LENS, OPTICAL INSTRUMENT 8270607 (19200)	EA	1	--	--	--	*	2	2	24	5	5	10
N	X1	-	-		SPACER AL ALY TBG, SLTD, 0.824 ID, 0.943 OD, 0.110 THK 8270671 (19200)	---	1	--	--	--	--	--	--	--	--	5	11

C	P-	H-	-	1240-692-1526	LENS, OBJECTIVE 8270606 (19200)	EA	1	--	--	--	*	2	2	24	5	5	12
N	X1	-	-		CELL, UPPER 8270632 (19200)	---	1									5	13



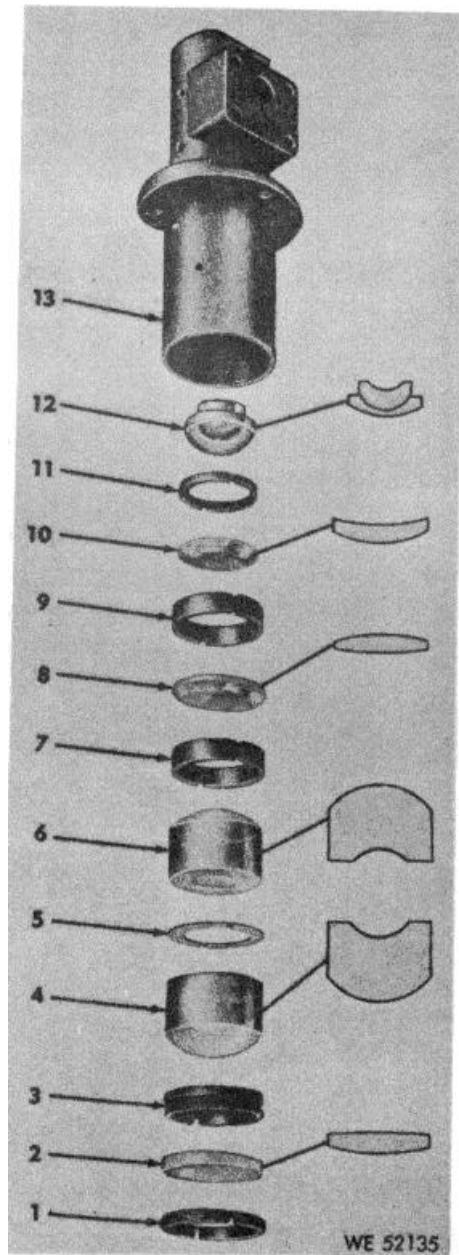


Figure 5. Cell assembly (8270649).

ACT ON CODE	(1) SOURCE MAINT AND RECOV CODE			(2)  FEDERAL STOCK NO.	(3)  DESCRIPTION  Reference Number & Mfr Code Usable On Code	(4)  UNIT OF MEAS.	(5)  QTY INC IN UNIT	(6) 30-DAY OS MAINT ALLOWANCE			(7) 30-DAY GS MAINT ALLOWANCE			(8)  1-YR ALW PER 100 EQUIP CNTGCV	(9)  DEPOT MAINT ALW PER 100 EQUIP	(10) ILLUSTRATION	
	(a)	(b)	(c)					(a)	(b)	(c)	(a)	(b)	(c)			(a)	(b)
	Source	Maint	Recov					1-20	21-50	51-100	1-20	21-50	51-100			FIG. NO.	ITEM NO.
					<b>CELL ASSEMBLY 8270650</b>												
C	P-	H-		5340-664-4642	RING, EXTERNALLY THREADED AL ALY, 0.910 ID, 1-1/8 32NS-2A OD, 0.140 THK 8270669 (19200)	EA	1	--	--	--	REF	REF	REF	--	REF	6	1
C	P-	H-		1240-692-1533	(See Fig 5, Item 1 for Allowances) LENS, OPTICAL INSTRUMENT (ERECTOR) 8270612 (19200)	EA	1	--	--	--	*	2	2	24	5	6	2
N	X1	-	-		SPACER AL ALY TBG, 0.882 ID, 0.982 OD, 0.304 THK 8270670 (19200)	---	1	--	--	--	--	--	--	--	--	6	3
C	P-	H-	-	1240-692-1532	LENS, OPTICAL INSTRUMENT (ERECTOR) 8270611 (19200)	EA	1	--	--	--	*	2	2	24	5	6	4
N	X1	-	-		CELL 8270633 (19200)	---	1	--	--	--	--	--	--	--	--	6	5

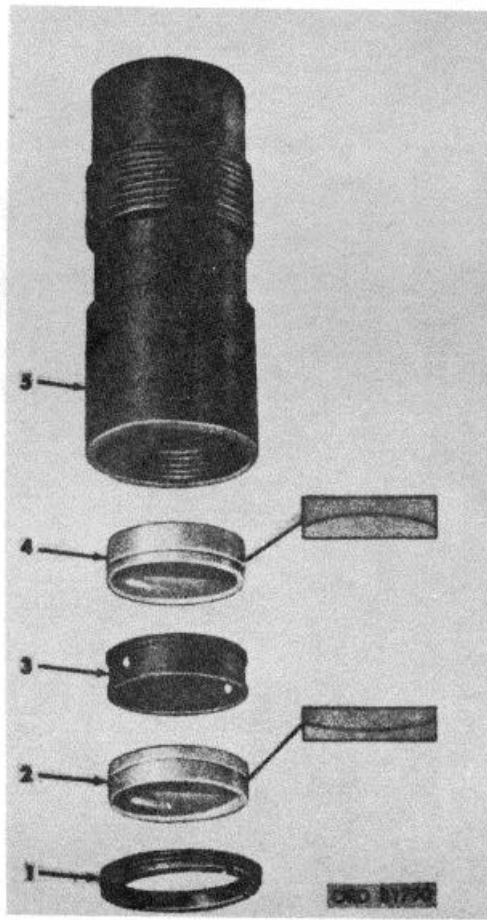


Figure 6. Cell assembly (8270650).

ACT ON CODE	(1) SOURCE MAINT AND RECOV CODE			(2)  FEDERAL STOCK NO.	(3)  DESCRIPTION  Reference Number & Mfr Code Usable On Code	(4)  UNIT OF MEAS.	(5)  QTY INC IN UNIT	(6) 30-DAY OS MAINT ALLOWANCE			(7) 30-DAY GS MAINT ALLOWANCE			(8)  1-YR ALW PER 100 EQUIP CNTGCTY	(9)  DEPOT MAINT ALW PER 100 EQUIP	(10) ILLUSTRATION	
	(a)	(b)	(c)					(a)	(b)	(c)	(a)	(b)	(c)			(a)	(b)
	Source	Maint	Recov					1-20	21-50	51-100	1-20	21-50	51-100			FIG. NO.	ITEM NO.
					<b>SIGHT, PERISCOPE, M28 (8270601), M28C (8293432) OR M28D (8565458)</b>												
N	X	-	-		SCREW, CAP, SOCKET HEAD STL, CD PL, NO 8 32UNC-3A, 1/2 L MS16997-32 (96906)	---	1	--	--	--	--	--	--	--	--	7	1
N	X	-	-		RING, RETAINING MS16624-1031 (96906)	---	1	--	--	--	--	--	--	--	--	7	2
N	X	-	-		PIN 8270699 (19200)	---	1	--	--	--	--	--	--	--	--	7	2
N	P-	F-		5305-978-9354	SCREW, CAP, SOCKET HEAD STL, CD PL, NO 10 24UNC-3A, 1/2 L MS16997-44 (96906)	EA	3	*	2	2	*	2	2	24	10	7	4
N	P-	F-		5306-978-9353	SCREW, CAP, SOCKET HEAD STL, CD PL, NO 10 24UNC-3A, 3/8 L MS16997-43 (96906)	EA	2	2	2	2	2	2	2	24	5	7	5
N	X1	-	-		BODY 8270705 (19200)	---	1	--	--	--	--	--	--	--	--	7	6
C	P-	H-		5330-599-6696	PACKING, PREFORMED "O" RING, RBR CMPD, 2.219 ID, 0.143 THK 7687318 (19200)	EA	1	--	--	--	2	2	2	24	10	7	7
C	P-	F-		4931-795-5405	WRENCH, SPECIAL 1/8 HEX 8270689 (19200)	EA	1	*	*	2	*	*	2	24	10	7	8
C	P-	F-	-	1240-796-4753	CHAIN, ASSEMBLY, SINGLE LEG 8270639 (19200)	EA	1	*	*	2	*	*	2	24	5	7	9
N	X	-	-		SCREW MACHINE PNH, CROSS REC, CRES, PSVT FNSH, NO 4 40UNC-2A 3/16L MS51957-12 (96906)	---	2	--	--	--	--	--	--	--	--	7	10
N	X	-	-		COUPLING 583130 (21450)	---	1	--	--	--	--	--	--	--	--	7	11
N	M-	D-			PLATE, IDENTIFICATION 8270323 (19200)	---	1	--	--	--	--	--	--	--	--	7	12
N	M-	D-			PLATE, IDENTIFICATION 8270322 (19200)	---	1	--	--	--	--	--	--	--	--	7	13
N	M-	D-			PLATE, IDENTIFICATION 8565600 (19200)	---	1	--	--	--	--	--	--	--	--	7	14

ACT ON CODE	(1) SOURCE MAINT AND RECOV CODE			(2)  FEDERAL STOCK NO.	(3)  DESCRIPTION		(4)  UNIT OF MEAS.	(5)  QTY INC IN UNIT	(6) 30-DAY OS MAINT ALLOWANCE			(7) 30-DAY GS MAINT ALLOWANCE			(8)  1-YR ALW PER 100 EQUIP CNTGCTY	(9)  DEPOT MAINT ALW PER 100 EQUIP	(10) ILLUSTRATION	
	(a)	(b)	(c)		Reference Number & Mfr Code	Usable On Code			(a)	(b)	(c)	(a)	(b)	(c)			(a)	(b)
	Source	Maint	Recov						1-20	21-50	51-100	1-20	21-50	51-100			FIG. NO.	ITEM NO.
C	P-	F-	-	5340-795-5406	CLIP, SPRING TENSION 8270690 (19200)		EA	1	*	*	2	*	*	2	24	6	7	15
C	P-	H-	-	5306-282-7649	SETSCREW HDLS, FL PT, CRES, PSVT FNSH, NO 5 44NF-2A 1/8 L 540883 (21450)		EA	3	--	--	--	2	2	3	86	15	7	16
N	P-	F-	-	5305-551-0156	SETSCREW HEX SOC, CUP PT, CRES, PSVT FNSH, NO 8 32UNC-3A 3/16 L MS51021-31 (96906)		EA	3	*	2	2	*	2	2	24	10	7	17
N	P-	H-	-	5305-724-3439	SETSCREW HEX SOC, FL PT, CRES, PSVT FNSH, NO 8 36UNF-3A 1/8 L MS51031-33 (96906)		EA	1	--	--	--	2	2	2	24	5	7	18
C	P-	H-	-	1240-547-4617	DISK, SOLID PLAIN NYL, 0.130 OD, 0.30 THK 8585228 (19200)		EA	1	--	--	--	2	2	2	24	5	7	19
N	X1	-	-		EYEPiece ASSEMBLY 8565261 (19200)	C	---	1	--	--	--	--	--	--	--	--	7	20
N	X1	-	-		EYEPiece ASSEMBLY 8293430 (19200)	B	---	1	--	--	--	--	--	--	--	--	7	21
N	X1	-	-		EYEPiece ASSEMBLY 8270647 (19200)	A7	---	1	--	--	--	--	--	--	--	--		22

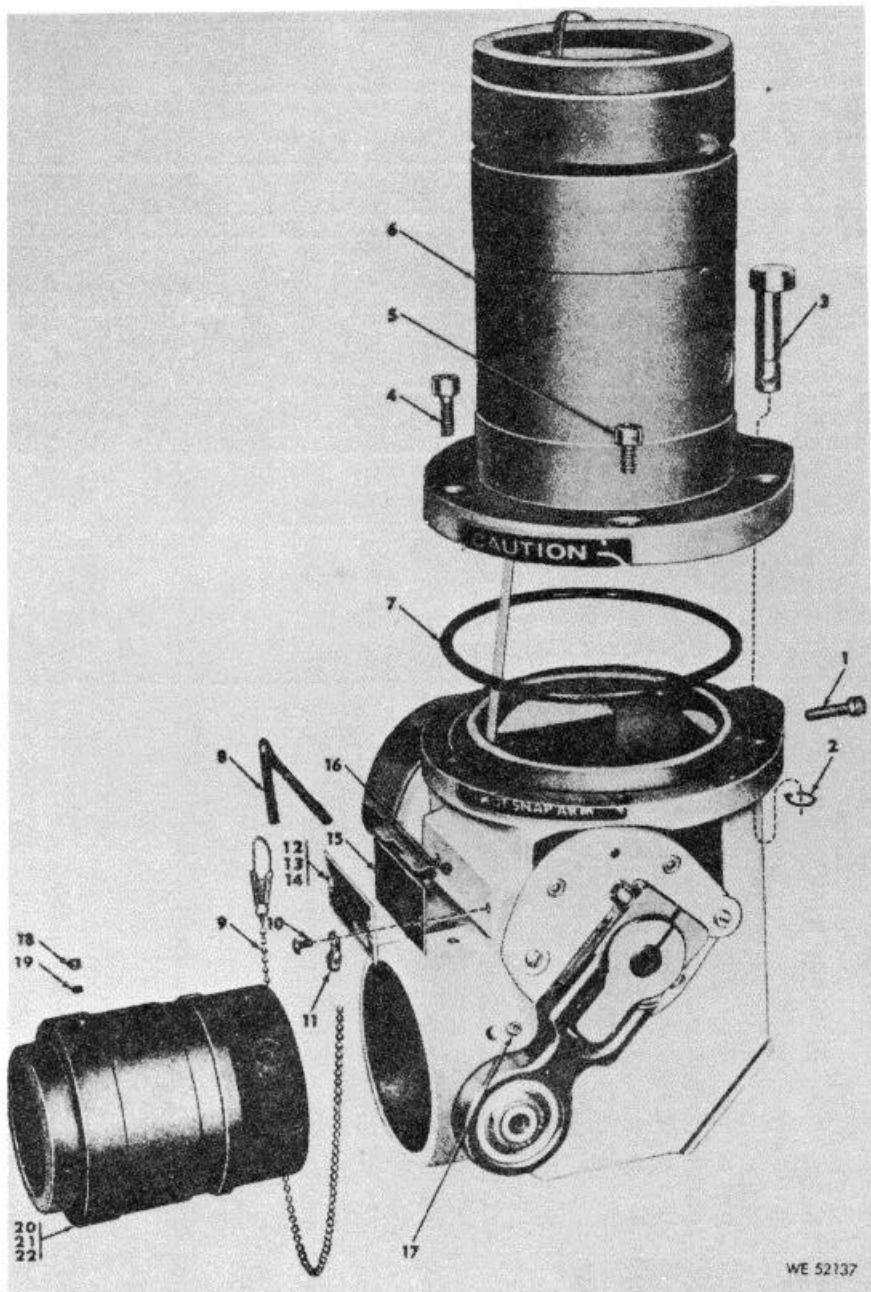


Figure 7. Sight, periscope, M28 (8270601), M28C (8295452), or M28D (8565458) -partial exploded view.

ACT ON CODE	(1) SOURCE MAINT AND RECOV CODE			(2)  FEDERAL STOCK NO.	(3)  DESCRIPTION		(4)  UNIT OF MEAS.	(5)  QTY INC IN UNIT	(6) 30-DAY OS MAINT ALLOWANCE			(7) 30-DAY GS MAINT ALLOWANCE			(8)  1-YR ALW PER 100 EQUIP CNTGNCY	(9)  DEPOT MAINT ALW PER 100 EQUIP	(10) ILLUSTRATION	
	(a)	(b)	(c)		Reference Number & Mfr Code	Usable On Code			(a)	(b)	(c)	(a)	(b)	(c)			(a)	(b)
	Source	Maint	Recov						1-20	21-50	51-100	1-20	21-50	51-100			FIG. NO.	ITEM NO.
					<b>EYEPIECE ASSEMBLY 8270647 (M28) 8293430 (M28C) OR 8565261 (M28D)</b>													
N	X1	-	-		SCREW, SPECIAL HOLS, CRES, NO 2 56NC-2A, 0.08 L 8270614 (19200)		---	2	--	--	--	--	--	--	--	--	8	1
N	X1	-	-		SCREW, SPECIAL HOLS, CRES, NO 2 56NC-2A, 0.08 L 8270614 (19200) (See Fig 8, Item 1 for Initial Listing)		---	REF	--	--	--	--	--	--	--	--	8	2
C	P-	H-	-	5340-664-4644	RING, EXTERNALLY THREADED AL ALY, 1.73 ID, 2-32NS-2A OD, 0.22 THK 8270662 (19200)		EA	1	--	--	--	*	2	2	24	6	8	3
N	X1	-	-		SPACER CRES, 1.735 ID, 1.835 OD, 0.015 THK 8270663 (19200)		---	1	--	--	--	--	--	--	--	--	8	4
C	P-	H-	-	1240-901-8668	RETICLE, OPTICAL INSTRUMENT 8565601 (19200)	C	EA	1	--	--	--	*	2	2	24	5	8	5
C	P-	H-	-	1240-818-2741	RETICLE, OPTICAL INSTRUMENT 8293434 (19200)	B	EA	1	--	--	--	*	2	2	24	5	8	6
C	P-	H-	-	1240-692-1541	RETICLE, OPTICAL INSTRUMENT 8270618 (19200)	A	EA	1	--	--	--	*	2	2	24	5	8	7
N	X1	-	-		CELL, RETICLE 8270664 (19200)		---	1	--	--	--	--	--	--	--	--	8	8
C	P-	H-	-	5340-664-4643	RING, EXTERNALLY THREADED AL ALY, 1.790 ID, 2-32NS-2A OD, 0.14 THK 8270665 (19200)		EA	1	--	--	--	*	2	2	24	5	8	9
C	P-	H-	-	1240-692-1535	LENS, OPTICAL INSTRUMENT (FIELD) 8270615 (19200)		EA	1	--	--	--	*	2	2	24	5	8	10
N	X1	-	-		SPACER AL ALY TBG, 1.82 ID, 1.888 OD, 0.359 THK 8270666 (19200)		---	1	--	--	--	--	--	--	--	--	8	11
C	P-	H-	-	1240-692-1536	LENS, OPTICAL INSTRUMENT (CENTER) 8270616 (19200)		EA	1	--	--	--	*	2	2	24	5	8	12

N	X1	-	-		SPACER, EYEPIECE SMLS AL ALY TBG, 1.4560 ID, 1.888 OD, 0.215 THK 8270667 (19200)	---	1	--	-	--	--	--	--	--	--	8	13
C	P-	H-	-	1240-692-1540	LENS, OPTICAL INSTRUMENT 8270617 (19200)	EA	1	--	--	--	*	2	2	24	5	8	14
N	X1	-	-		CELL, EYEPIECE 8270630 (19200)	---	1	--	--	--	--	--	--	--	--	8	15



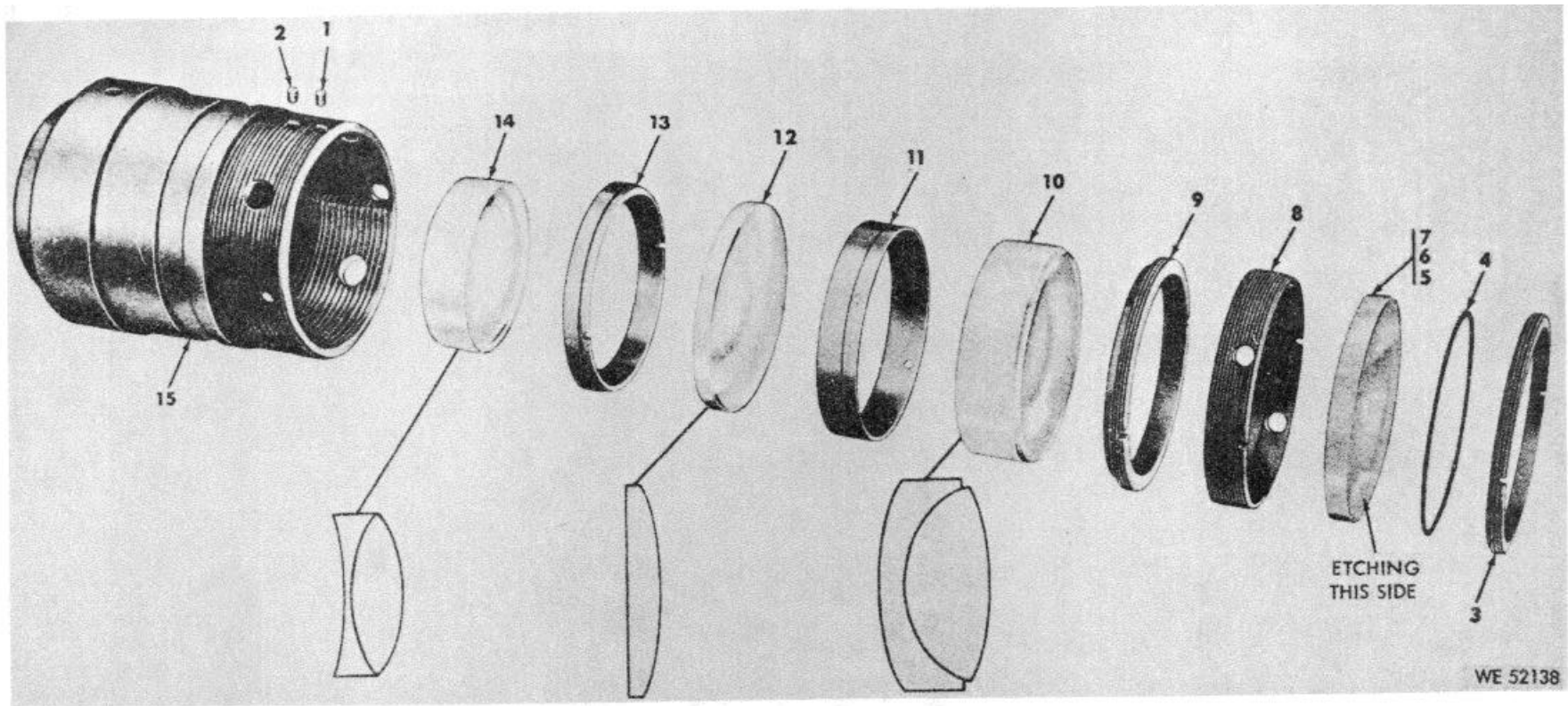
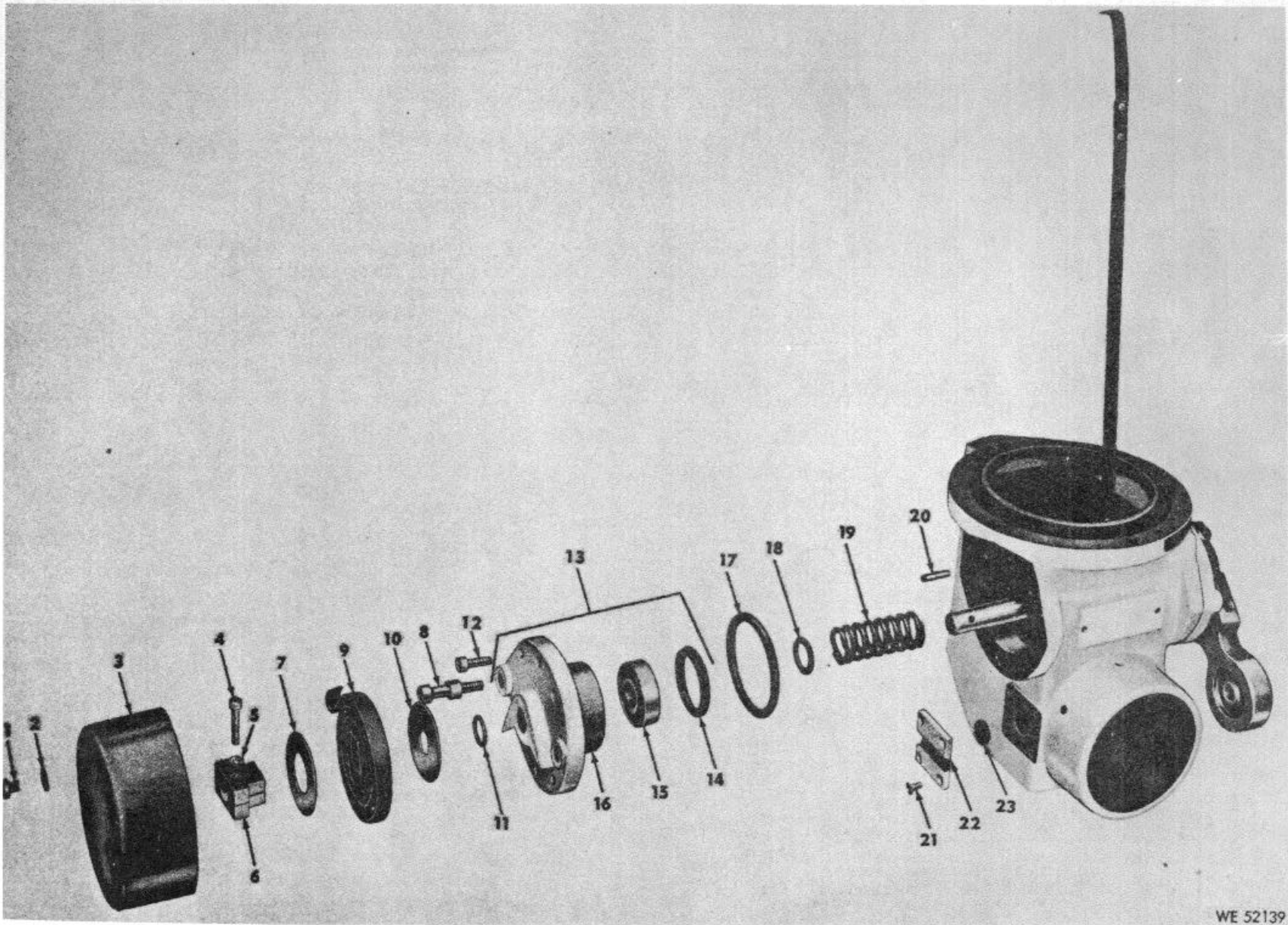


Figure 8. Eyepiece assembly 8270647 (M28), 8295430 (M28C), or 8565261 (M28D).

ACT ON CODE	(1) SOURCE MAINT AND RECOV CODE			(2)  FEDERAL STOCK NO.	(3)  DESCRIPTION  Reference Number & Mfr Code Usable On Code	(4)  UNIT OF MEAS.	(5)  QTY INC IN UNIT	(6) 30-DAY OS MAINT ALLOWANCE			(7) 30-DAY GS MAINT ALLOWANCE			(8)  1-YR ALW PER 100 EQUIP CNTGCTY	(9)  DEPOT MAINT ALW PER 100 EQUIP	(10) ILLUSTRATION	
	(a)	(b)	(c)					(a)	(b)	(c)	(a)	(b)	(a)			(b)	
	Source	Maint	Recov					1-20	21-50	51-100	1-20	21-50	51-100			FIG. NO.	ITEM NO.
N	P-F-	-	-	5305-054-6665	SIGHT, PERISCOPE, M28 (8270601), M28C (8293432) OR M28D (8565458) SCREW, MACHINE PNH, CROSS REC, CRES, PSVT FNSH, NO 8 32UNC-2A 3/16 L MS51957--40 (96906)	EA	2	2	2	4	2	2	4	48	20	9	1
N	P-F-	-	-	5310-013-1074	WASHER, LOCK SPR HLCL, CS 1.042 ID, 1.661 OD, 0.250 THK MS35338-72 (96906)	EA	2	*	2	2	*	2	2	24	10	9	2
N	P-F-	-	-	1240-855-5914	COVER 8270656 (19200)	EA	1	*	2	*	1	2	2	24	6	9	3
N	X1-	-	-		SCREW, CAP, SOCKET HEAD STL, CD PL, NO 4 40UNC-3A, 1/2 L MS16997-11 (96906)		1									9	4
N	X1-	-	-		WASHER, LOCK SPR HLCL, CRES, PSVT FNSH, 0.121 ID, 0.204 OD, 0.025 THK MS35338-135 (96906)		1									9	5
N	X-	-	-		CLAMP 1 9 6 8270692 (19200)		1									9	7
C	P-H-	-	-	1240-535-6922	STUD 8270640 (19200)	EA	2				*	*	2	24	5	9	8
C	P-F-	-	-	5340-530-4935	SPRING, SPIRAL, TORSION 8270693 (19200)	EA	1	*	2	2	*	2	2	24	10	9	9
N	X-	-	-		WASHER, PLAIN CRES, PSVT FNSH, 0.406 ID, 1-1/4 OD, 0.032 THK 8270602 (19200)		1									9	10
C	P-H-	-	-	5330-692-1525	PACKING PREFORMED "O" RING, RBR CMPD, 0.364 ID, 0.070 THK 7652716 (19200)	EA	2			1	2	2	2	24	10	9	11

ACT ON CODE	(1) SOURCE MAINT AND RECOV CODE			(2)  FEDERAL STOCK NO.	(3)  DESCRIPTION  Reference Number & Mfr Code Usable On Code	(4)  UNIT OF MEAS.	(5)  QTY INC IN UNIT	(6) 30-DAY OS MAINT ALLOWANCE			(7) 30-DAY GS MAINT ALLOWANCE			(8)  1-YR ALW PER 100 EQUIP CNTGCTY	(9)  DEPOT MAINT ALW PER 100 EQUIP	(10) ILLUSTRATION	
	(a)	(b)	(c)					(a)	(b)	(c)	(a)	(b)	(a)			(b)	
	Source	Maint	Recov					1-20	21-50	51-100	1-20	21-50	51-100			FIG. NO.	ITEM NO.
N	P - F -			5305-978 9347	SCREW. CAP. SOCKET HEAD STL, CD PL. NO 6 32UNC - 3A, 3/8L MS16997-19 (96906)	EA	8	2	2	4	2	2	4	48	20	9	12
N	X -				COVER ASSEMBLY 8270671 (19200)		1									9	13
C	P H-			5340-664-4642	RING; EXTERNALLY THREADED AL ALY, 0.910 ID, 1-1/8 32 NS-2A OD, 0.140 THK 8270688 (19200 ) (See Fig 5, Item 1 for Allowances)	EA	1				REF	REF	REF			9	14
C	P-H-			3110 752 7776	BEARING, BALL, ANNULAR COVER, LEFT 8270642 (19200)	EA	3				*	*	2	24	6	9	15
N	X --						1									9	16
C	P-H -			5330-599-6697	PACKING, PREFORMED "O" RING, RBR CMPD, 1.415, ID, 0.143 THK 7687317 (19200)	EA	2				2	2	4	48	20	9	17
C	P-H -			5310-527-4508	WASHER, FLAT CRES, 0.406 ID, 0.625 OD, 0.063 THK 8270657 (19200)	EA					*	*	2	24	5	9	18
C	P-H -			5340-664-0503	SPRING, HELICAL, COMPRESSION MUW 0.092 DIA, 0.418 ID, ID, 1.525 L, 7-1/2 COIL 8270691 (19200)	EA	1				*	2	2	24	10	9	19
N	P-H-			5315-822-1180	PIN, STRAIGHT, HEADLESS CRES, PSVT FNSH, 1/8 DIA, 1/2 L MS16555-27 (96906) (See Fig 3, Item 15 for Allowances)	EA	REF				REF	REF	REF			9	20
N	P-F-			5305-770-2533	SCREW, MACHINE FL CTSK HD, CROSS REC, CRES, PSVT FNSH, NO 4 4OUNC-2A 1/4L MS51959-13 (96906)	EA	4	*	2	2	*	2	2	24	10	9	21
C	P-F-			1240-522-9966	PLATE AL ALY, 1 IN SQ, 7/64 THK 7687314 (19200)	EA	1	*	*	2	*	*	2	24	5	9	22
C	P-F-			1240-246-8216	FILTER, LIGHT, OPTICAL INSTRUMENT ORANGE-RED PL GL 8567562 (19200)	EA	1	*	*	2	*	*	2	24	5	9	23



WE 52139

Figure 9. Sight, Periscope, M28 (8270601, M28C (829S142), or M28D (8565458) – partial exploded view..

ACT ON CODE	(1) SOURCE MAINT AND RECOV CODE			(2)  FEDERAL STOCK NO.	(3)  DESCRIPTION  Reference Number & Mfr Code Usable On Code	(4)  UNIT OF MEAS.	(5)  QTY INC IN UNIT	(6) 30-DAY OS MAINT ALLOWANCE			(7) 30-DAY GS MAINT ALLOWANCE			(8)  1-YR ALW PER 100 EQUIP CNTGCTY	(9)  DEPOT MAINT ALW PER 100 EQUIP	(10) ILLUSTRATION	
	(a)	(b)	(c)					(a)	(b)	(c)	(a)	(b)	(a)			(b)	
	Source	Maint	Recov					1-20	21-50	51-100	1-20	21-50	51-100			FIG. NO.	ITEM NO.
N	M-D-				SIGHT, PERISCOPE, M28 (8270601), M28C (8293432) OR M28D (8565458) PIN, STRAIGHT CHAM 1/64, CRES, 0.1260 DIA, 11/16 L 502976 (21450)		1									10	1
N	X--				ARM ASSEMBLY 8270661 (19200)		1									10	2
N	P-F-		5305-978-9374		SCREW, CAP, SOCKET HEAD STL, CD PL, NO 8 32UNC-3A, 1 IN L MS16997-36 (96906)	EA	1	*	2	2	*	2	2	24	10	10	3
N	P-F-		5310-933-8119		WASHER, LOCK SPR HLCL, CRES, PSVT FNSH, 0.175 ID, 0.293 OD, 0.040 THK MS35338-137 (96906)	EA	1	*	2	2	*	2	2	24	10	10	4
C	P-F-		5305 638-8693		SETSCREW SPCL HEX SOC, CRES, PSVT FNSH, 1/4 28UNF-3A, 0.312 L 8201896 (19200)	EA	2	*	2	2	*	2	2	24	10	10	5
C	P-F-		630-638-8693		SETSCREW SPCL HEX SOC, CRES, PSVT FNSH, 1/4 28UNF-3A, 0.312 L 8201896 (19200) (See Fig 10, Item 5 for Allowances)	EA	REF	REF	REF	REF	REF	REF	REF	REF	REF	10	6
N	X--				ARM 8270660 (19200)		1									10	7
C	P-H-		1240-346-8218		BEARING SELF-ALINING, 1/4 ID, 1 IN OD, 1/2 W 8567567 (19200)	EA	1				*	2	2	24	5	10	8
N	X--				ARM 8585225 (19200)		1									10	9
N	X--				SCREW, MACHINE PNH, CROSS REC, CRES, PSVT FNSH, NO 40UNC-2A, 5/16 L MS51957-14 (96906)		2									10	10
N	X--				CLAMP 8270695 (19200)		1									10	11
C	P-H-		1240-767-6400		STRAP ASSEMBLY 8270687 (19200)	EA	1				*	*	2	24	5	10	12

N	X1--		STRAP CRES, 0.003 THK, 0.126 W, 2-13/32 L 7687320 (19200)		2									10	13
N	X1--		RIVET 82018665 (19200)		4									10	14
N	XI--		STRAP, CONTROL AL ALY, 7-29/32 L, 0.126 W, 0.032 THK 7687319 (19200)		1									10	15
N	X1--		STRAP CRES, 0.003 THK, 0.125 W, 2-13/32 L 7687320 (19200) (See Fig 10, Item 13 for Initial Listing)		1									10	16
N	X--		SETSCREW HEX SOC, CUP PT STL, CD PL, NO 10 32UNF-3A 1/2 L MS51964-53 (96906)		2									10	17
N	P-F-	5305-978-9347	SCREW, CAP, SOCKET, HEAD STL, CD PL, NO 6 32UNC-3A, 3/8 L MS16997-19 (96906) (See Fig 9, Item 12 for Allowances)	EA	REF	REF	REF	REF	REF	REF	REF	REF	REF	10	18
N	X--		COVER ASSEMBLY 8270643 (19200),		1									10	19
C	P-H-	5330-692-1525	PACKING, PREFORMED "O" RING, RBR CMPD, 0.346 ID, 0.070 THK 7652716 (19210) (See Fig 9, Item 11 for Allowances)	EA	REF			REF	REF	REF		REF	REF	10	20
N	P-H-	5305-081-2651	SETSCREW HEX SOC, CP CRES, PSVT FNSH, NO 2 64UNF-3A, 3/32 L MS51038-15 (96906)	EA	1			*	*	2	24	5		10	21
C	P-H-	534-664-4642	RING, EXTERNALLY THREADED AL ALY, 0.910 ID, 1-1/8 32NS-2A OD, 0.140 THK 8270669 (19200) (See Fig 5, Item 1 for Allowances)	EA	1			REF	REF	REF		REF	REF	10	22
N	X-		COVER, RIGHT 1 10 23 8270644 (19200)												
C	P-H-	3110-752-7776	BEARING, BALL, ANNULAR 0.3937 ID, 1.0237 OD, 0.315 THK 8270688 (19200) (See Fig 9, Item 15 for Allowances)	EA	REF			REF	REF	REF		REF	REF	10	24
N	P-H--	5315-187-3228	PIN, TAPERED, PLAIN CRES, NO 6/0, 1/2 L MS24692-30 (96906)	EA	1			*	*	2	24	5		10	25

ACT ON CODE	(1) SOURCE MAINT AND RECOV CODE			(2)  FEDERAL STOCK NO.	(3)  DESCRIPTION		(4)  UNIT OF MEAS.	(5)  QTY INC IN UNIT	(6) 30-DAY OS MAINT ALLOWANCE			(7) 30-DAY GS MAINT ALLOWANCE			(8)  1-YR ALW PER 100 EQUIP CNTGCV	(9)  DEPOT MAINT ALW PER 100 EQUIP	(10) ILLUSTRATION	
	(a)	(b)	(c)		Reference Number & Mfr Code	Usable On Code			(a)	(b)	(c)	(a)	(b)	(c)			(a)	(b)
	Source	Maint	Recov						1-20	21-50	51-100	1-20	21-50	51-100			FIG. NO.	ITEM NO.
N	X--					SPACER CRES, 0.395 ID, 1/2 OD, 0.187 THK 8270694 (19200)		1									10	26
C	P-H-			3110-752-7776		BEARING, BALL, ANNULAR 0.3937 ID, 1.0237 OD, 6.815 THK 8270688 (19200) (See Fig 9, Item 15 for Allowances)	EA	REF				REF	REF	REF		REF	10	27
N	X --					SHAFT 8270646 (19200)		1									10	28
C	P-H-			5380-699-6997		PACKING, PREFORMED "O" RING, RBR CMPD, 1.415 ID, 0.148 THK 7687317 (19200) (See Fig 9, Item 17 for Allowances)	EA	REF				REF	REF	REF		REF	10	29
N	P-H-			5315-822-1180		PIN, STRAIGHT, HEADLESS CRES, PSVT FNSH, 1/8 DIA, 1/ L MS16555-27 (96906) (See Fig 3, Item 15 for Allowances)	EA	REF				REF	REF	REF		REF	10	30

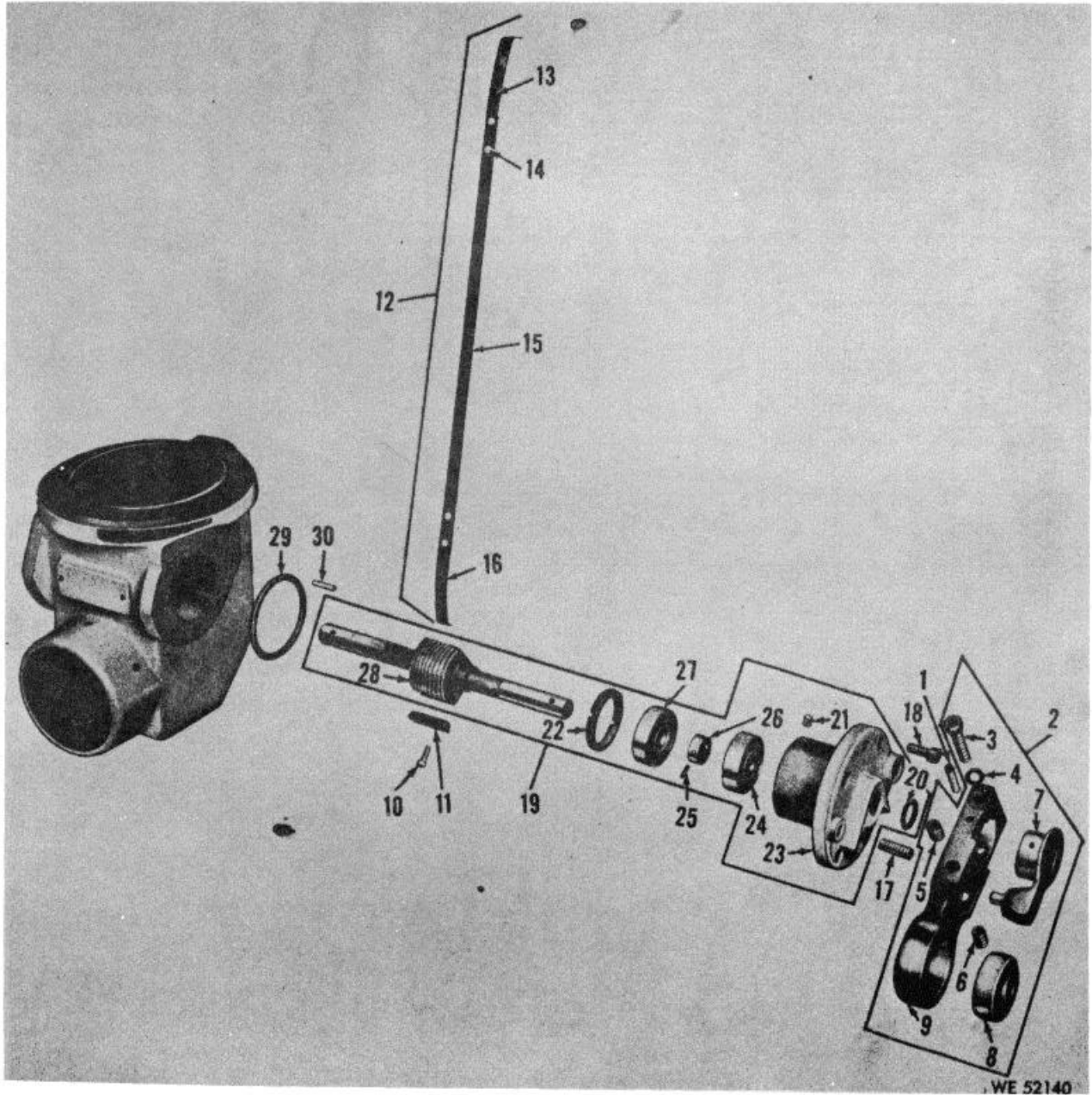


Figure 10. Sight, Periscope, M28 (8270601), M28C (8293432), or .M28D (8565458)  
-partial exploded view.



ACT ON CODE	(1) SOURCE MAINT AND RECOV CODE			(2)  FEDERAL STOCK NO.	(3)  DESCRIPTION  Reference Number & Mfr Code Usable On Code	(4)  UNIT OF MEAS.	(5)  QTY INC IN UNIT	(6) 30-DAY OS MAINT ALLOWANCE			(7) 30-DAY GS MAINT ALLOWANCE			(8)  1-YR ALW PER 100 EQUIP CNTGCV	(9)  DEPOT MAINT ALW PER 100 EQUIP	(10) ILLUSTRATION	
	(a)	(b)	(c)					(a)	(b)	(c)	(a)	(b)	(c)			(a)	(b)
	Source	Maint	Recov					1-20	21-50	51-100	1-20	21-50	51-100			FIG. NO.	ITEM NO.
N	P-F-			5305-765-4257	SIGHT, PERISCOPE, M28 (8270601), M28C (8293432) OR M28D (8565458) SCREW, MACHINE FL CISK HD, CROSS REC, CRES, PSVT FNSH, NO 8 32UNC-2A, 3/8 L MS51959-4:3 (96906)	EA	4	2	2	2	2	2	24	20	11	1	
N	X -				COVER 7674684 (19200)		1								11	2	
N	P-H-			5305-753-4187	SETSCREW HEX SOC, FL PT, CRES, PSVT FNSH, NO 8 32UNC-3A, 5/16 L MS51029-28 (96906)	EA	3				*	2	2	24	10	11	3
C	P-H-			1240-692-1545	MIRROR (BONDED) 8270659 (19200)	EA	1				*	2	2	24	5	11	4
N	X1-				MIRROR 8276813 (19200)		1								11	2	
N	X1--				MOUNT, MIRROR 8270684 (19200)		1								11	6	
N	X1--				ELBOW, HOUSING 8270704 (19200)		1								11	7	

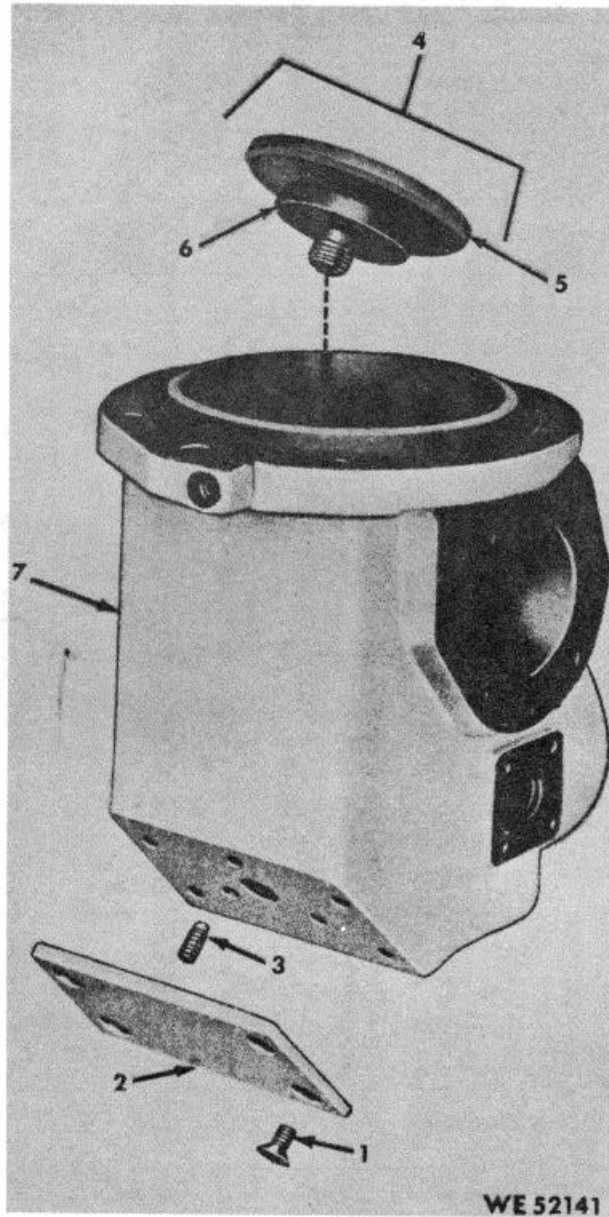


Figure 11. Sight, Periscope, M28 (8270601), M28C (829S432), or M28D (85658158)  
-partial exploded view.

**Section III. SPECIAL TOOLS, TEST AND SUPPORT EQUIPMENT FOR DIRECT SUPPORT, GENERAL SUPPORT and DEPOT MAINTENANCE**

ACT ON CODE	(1) SOURCE MAINT AND RECOV CODE			(2)  FEDERAL STOCK NO.	(3)  DESCRIPTION  Reference Number & Mfr Code Usable On Code	(4)  UNIT OF MEAS.	(5)  QTY INC IN UNIT	(6) 30-DAY OS MAINT ALLOWANCE			(7) 30-DAY GS MAINT ALLOWANCE			(8)  1-YR ALW PER 100 EQUIP CNTGCTY	(9)  DEPOT MAINT ALW PER 100 EQUIP	(10) ILLUSTRATION	
	(a)	(b)	(c)					(a)	(b)	(c)	(a)	(b)	(c)			(a)	(b)
	Source	Maint	Recov					1-20	21-50	51-100	1-20	21-50	51-100			FIG. NO.	ITEM NO.
					<b>TOOLS AND EQUIPMENT EQUIPMENT</b>												
C	P-F-	-		1240-346-8734	LINK ASSEMBLY 7660651 (19200)	EA	1	*	2	2	*	2	2	24	5	12	
C	P-F-	-		1240-602-7292	LINK ASSEMBLY 8270686 (19200)	EA	1	*	2	2	*	2	2	24	5	12	
C	P-F-	-		1240-754-7322	LINK ASSEMBLY 10516322 (19200)	EA	1	*	*	2	*	*	2	24	5	13	
C	P-O-			1240-209-6250	LINK ASSEMBLY 8565380 (19200)	EA	1	*	*	2	*	*	2	24	5	14	
					<b>REPAIR PARTS FOR EQUIPMENT LINK ASSEMBLY-7660651 AND 8270686</b>												
C	P-H-			530638-7732	BOLT, INTERNAL WRENCHING ALY STL, 1/4 28UNF-2A, 0.219 L 8201862 (19200)	EA	1				*	2	2	24	5	12	1
N	P-H-			5310-933-8121	WASHER LOCK SPR HLCL, CRES, PSVT FNSH, 0.263 ID, 0.489 OD, 0.062 THK MS35338-139 (96906)	EA	1				*	2	2	24	5	12	2
N	X1--				PIN, SPRING, TUBULAR CRES, 0.456 DIA, 7/16 L MS16562-220 (96906)		1									12	3
C	P-H-			3110-173-5077	BEARING, BALL, ROD END DR, INT, SELF-ALINING, FEM HEX-END SHK, TWO SHIELDS, 0.2500 BORE, 0.938 OD, RH THD 5/16 24NF-3, 3/4 L 712017 (21450)	EA	1				*	2	2	24	5	12	4
N	X1--				PIN, SPRING, TUBULAR CRES, 0.521 DIA, 1/2 L MS16562-221 (96906)		1									12	5
N	X1--				STUD 7660652 (19200)		1									12	6
N	P-F-			5306-9789353	SCREW, CAP, SOCKET HEAD STL, CD PL, NO 10 24UNC--3A, 3/8 L MS16997-43 (96906)	EA	2	*	2	2	*	2	2	24	10	12	7

N	X1 --		CLAMP 7652718 (19200)		1									12	8
N	P-F-	5305-978-9353	SCREW, CAP, SOCKET HEAD STL, CD PL, NO 10 24UNC-3A, 3/8L MS16997-43 (96906)	EA	REF	REF	REF	REF	REF	REF	REF	REF	REF	12	9
C	P-F-	5340-514-2783	(See Fig 12, Item 7 for Allowances) TIE ROD TENSIONING, THREADED END CRES 5/16 HEX, 24UNF-2A, RH THD, OTHER END, 7-1/8L (LINK ASSEMBLY 7660651) 7687322 (19200)	EA	1	*	2	2	*	2	2	24	5	12	10
C	P-F-	5340-579-9993	TIE ROD, TENSIONING, THREADED END CRES 5/16 HEX, 24UNF-2A, RH THD, ONE END, 24UNF-2A, LH THD, OTHER END, 3-5/16 (LINK ASSEMBLY 8270686) (19200)	EA	1	*	2	2	*	2		24	5	12	11
C	P-F-	1240-346-8189	RETAINER 8201866 (19200)	EA	2	*	2	2	*	2	2	24	10	12	12
C	P-F--	1240-246-8189	RETAINER 8201866 (19200)	EA	REF	REF	REF	REF	REF	REF	REF		REF	12	13
C	P-F--	5315-597-0617	(See Fig 12, Item 12 for Allowances) PIN, GROOVED, HEADLESS CRES, 0.957 L 8201867 (19200)	EA	1	*	*	2	*	*	2	24	5	12	14
N	X1 --		LEVER 8201871 (19200)		1									12	15
N	X1 --		SPRING 8201868 (19200)		1									12	16
N	X1 --		CLAMP 7687323 (19200)		1									12	17

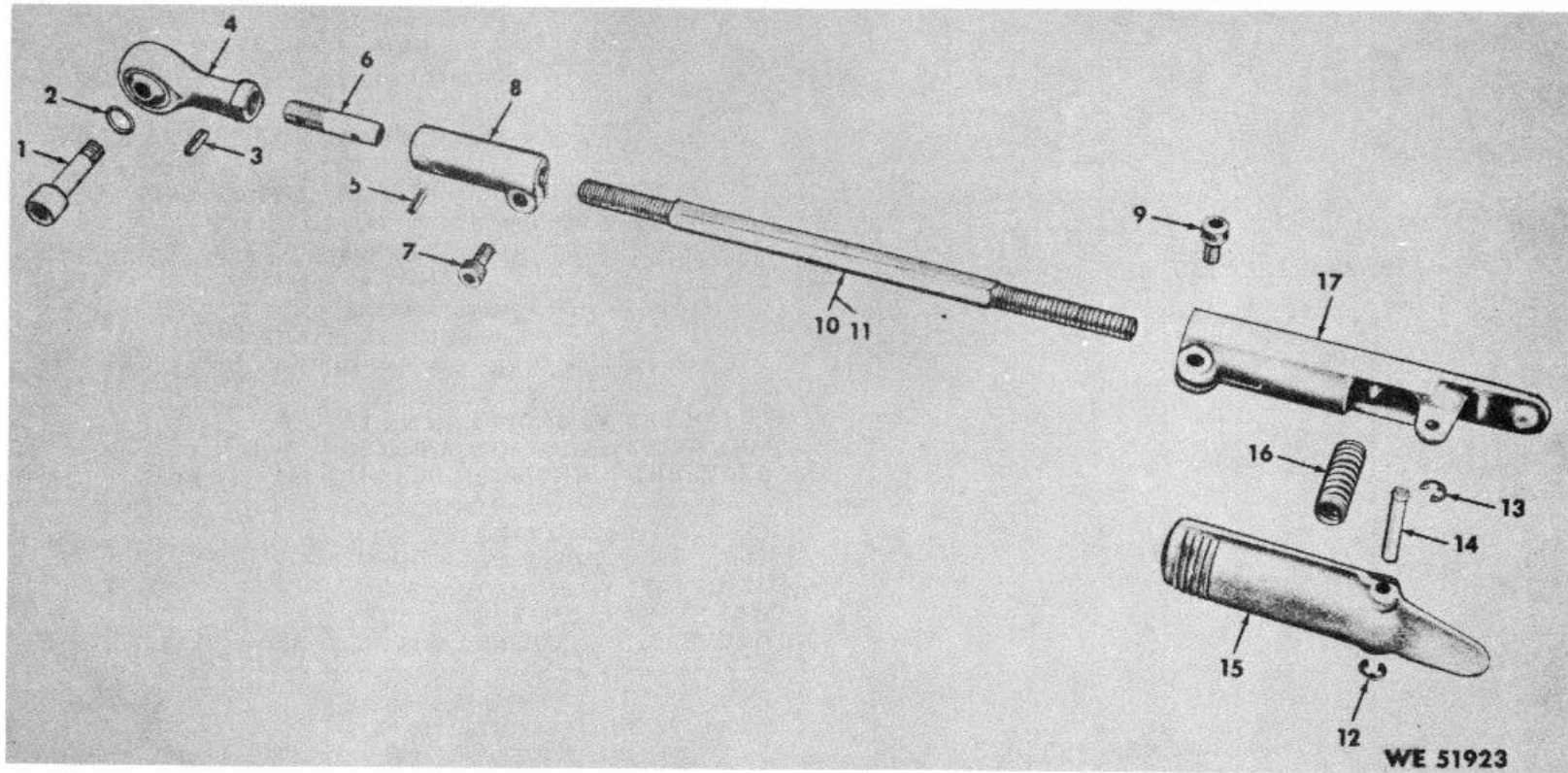


Figure 12. Link assembly 7660651 and 8270686.

ACT ON CODE	(1) SOURCE MAINT AND RECOV CODE			(2)  FEDERAL STOCK NO.	(3)  DESCRIPTION  Reference Number & Mfr Code Usable On Code	(4)  UNIT OF MEAS.	(5)  QTY INC IN UNIT	(6) 30-DAY OS MAINT ALLOWANCE			(7) 30-DAY GS MAINT ALLOWANCE			(8)  1-YR ALW PER 100 EQUIP CNTGCTY	(9)  DEPOT MAINT ALW PER 100 EQUIP	(10) ILLUSTRATION	
	(a)	(b)	(c)					(a)	(b)	(c)	(a)	(b)	(a)			(b)	
	Source	Maint	Recov					1-20	21-50	51-100	1-20	21-50	51-100			FIG. NO.	ITEM NO.
N	X1-				<b>LINK ASSEMBLY 10516322</b> NUT, SELF LOCKING, HEXAGON CRES, 1/4 28UNF-2B MS51922-6 (96906)		1									13	1
N	X1--				SPACER 1 13 2 8619555 (19200)												
N	X1--				SCREW (SPECIAL) 8635335 (19200)		1									13	3
N	X1--				WASHER 8619556 (19200)		1									13	4
N	X1--				ROD, END (FEMALE) 8619553 (19200)		1									13	5
N	X1--				NUT, PLAIN, HEXAGON CRES, PSVT FNSH, 5/16 24UNF-2B MS35691-B15 (96906)		1									13	6
C	P-F-			1240-346-8189	RETAINER 8201866 (19200) (See Fig 12, Item 12 for Allowances)	EA	2	REF	REF	REF	REF	REF	REF	REF	REF	13	7
C	P-F-			1240-346-8189	RETAINER 8201866 (19200) (See Fig 12, Item 12 for Allowances)	EA	2	REF	REF	REF	REF	REF	REF	REF	REF	13	8
C	P-F-			5315-597-0617	PIN, GROOVED, HEADLESS CRES, 0.957 L 8201867 (19200) (See Fig 12, Item 14 for Allowances)	EA	1	REF	REF	REF	REF	REF	REF	REF	REF	13	9
N	X1--				LEVER 8201871 (19200) (See Fig 12, Item 15 for Initial Listings)		1									13	10
N	X1--				SPRING 8201868 (19200) (See Fig 12, Item 16 for Initial Listing)		1									13	11
N	P-F--			5305-0574593	SCREW, CAP, SOCKET HEAD HEX, CRES, NO 10 32UNF-3A, 3/8 L MS16996-9 (96906)	EA	2	*	2	2	*	2	2	24	10	13	12
N	P-F--			5310-933-8120	WASHER, LOCK SPR HLCL, CRES, PSVT FNSH, 0.202 ID, 0.334 OD, 0.047 THK MS 36338-138 (96906)	EA	2	*	2	2	*	2	2	24	10	13	18

ACT ON CODE	(1) SOURCE MAINT AND RECOV CODE			(2)  FEDERAL STOCK NO.	(3)  DESCRIPTION		(4)  UNIT OF MEAS.	(5)  QTY INC IN UNIT	(6) 30-DAY OS MAINT ALLOWANCE			(7) 30-DAY GS MAINT ALLOWANCE			(8)  1-YR ALW PER 100 EQUIP CNTGCV	(9)  DEPOT MAINT ALW PER 100 EQUIP	(10) ILLUSTRATION	
	(a)	(b)	(c)		Reference Number & Mfr Code	Usable On Code			(a)	(b)	(c)	(a)	(b)	(c)			(a)	(b)
	Source	Maint	Recov						1-20	21-50	51-100	1-20	21-50	51-100			FIG. NO.	ITEM NO.
N	X1- -					CLAMP 1 7687323 (19200)										13	14	
N	P-F-			5305-0574593		(See Fig 12, Item 17 for Initial Listing) SCREW, CAP, SOCKET HEAD HEX, CRES, NO 10 32UNF-3A, 3/8 L MS 16996-9 (96906)	EA	REF	REF	REF	REF	REF	REF	REF	REF	13	15	
N	P-F-			5310-933-8120		(See Fig 13, Item 12 for Allowances) WASHER, LOCK SPR HLCL, CRES, PSVT FNSH, 0.202 ID, 0.334 OD, 0.047 THK MS35338-138 (96906)	EA	REF	REF	REF	REF	REF	REF	REF	REF	13	16	
N	P-F-			5307-924-7666		(See Fig 13, Item 13 for Allowances) STUD 8619554 (19200)	EA	1	*	*	2	*	*	2	24	5	13	17
N	X1- -					ROD 10516321 (19200)		1								13	18	
N	P-F- -			5340-598-3442		SEAL MS51938-5 (96906)	EA	1	*	*	2	*	*	2	24	5	13	19

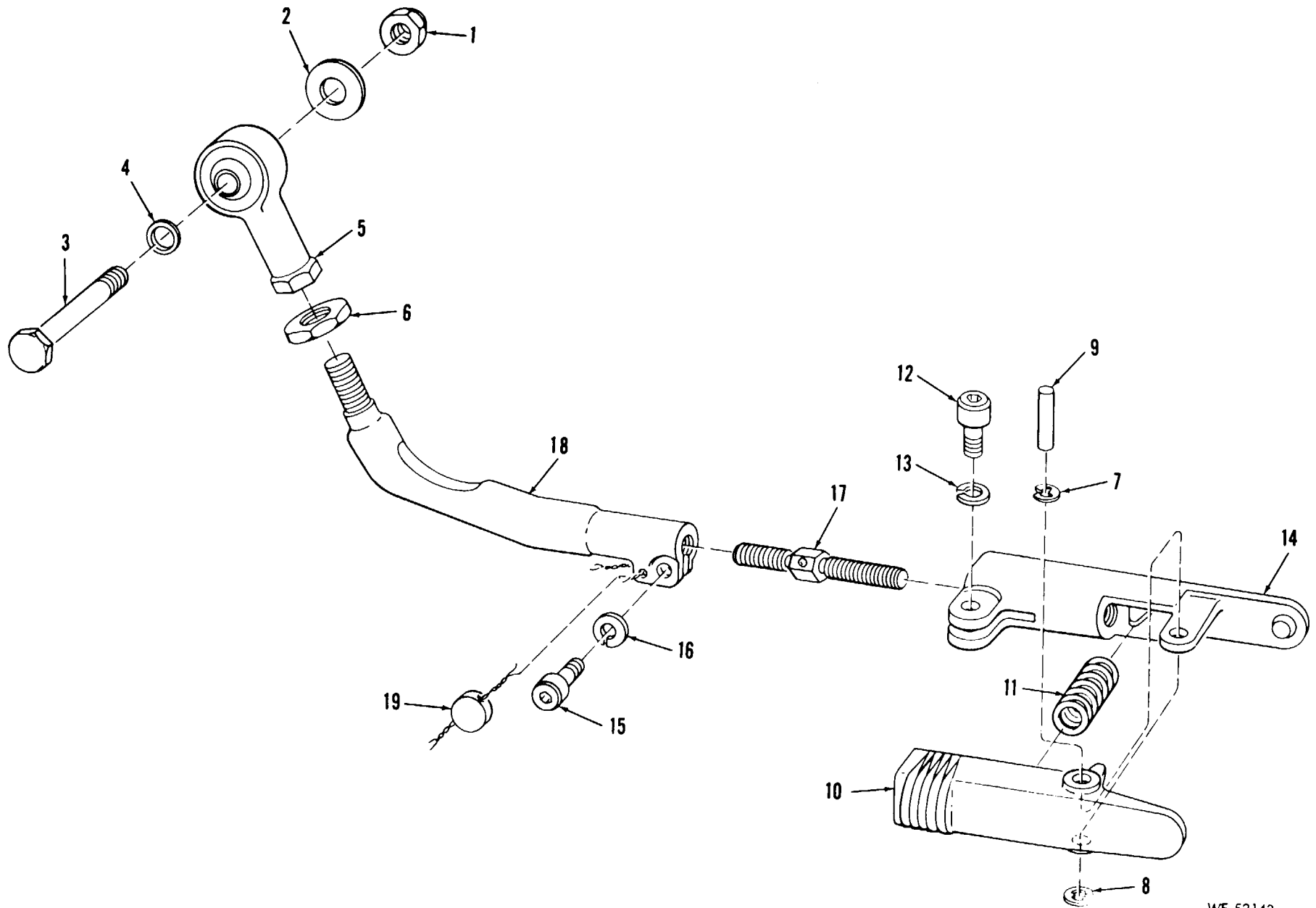


Figure 13. Link assembly 10516322.

WE 52143



ACT ON CODE	(1) SOURCE MAINT AND RECOV CODE			(2)  FEDERAL STOCK NO.	(3)  DESCRIPTION  Reference Number & Mfr Code Usable On Code	(4)  UNIT OF MEAS.	(5)  QTY INC IN UNIT	(6) 30-DAY OS MAINT ALLOWANCE			(7) 30-DAY GS MAINT ALLOWANCE			(8)  1-YR ALW PER 100 EQUIP CNTGNCY	(9)  DEPOT MAINT ALW PER 100 EQUIP	(10) ILLUSTRATION	
	(a)	(b)	(c)					(a)	(b)	(c)	(a)	(b)	(a)			(b)	
	Source	Maint	Recov					1-20	21-50	51-100	1-20	21-50	51-100			FIG. NO.	ITEM NO.
N	P-F-			5315-839-2325	<b>LINK ASSEMBLY 8565380</b> PIN, COTTER CS, CD PL, 1/16 DIA, 1/2 L MS24665-132 (96906)	EA	1	*	2	2	*	2	2	24	10	14	1
N	P-F-			5310-809-4058	WASHER, FLAT CS, CD PL, .281 ID, .625 OD, .065 THK MS27183-10 (96906)	EA	1	*	2	2	*	2	2	24	10	14	2
N	X1--				PIN, SPRING, TUBULAR CRES, 0.456 DIA, 7/16 L MS 16562-220 (96906) (See Fig 12, Item 3 for Initial Listing)		1									14	3
C	P-H-			3110-173-5077	BEARING, BALL, ROD END DR, INT, SELF-ALINING, FEM HEX-END SHK, TWO SHIELDS, 0.2500 BORE, 0.938 OD, RH THD, 5/16 24NF-3, 3/4 712017 (21450) (See Fig 12, Item 4 for Allowances)	EA	1				REF	REF	REF		REF	14	4
N	X1--				PIN, SPRING, TUBULAR CRES, 0.521 DIA, 1/2 L MS16562-221 (96906) (See Fig 12, Item 5 for Initial Listing)		1									14	5
N	X1--				STUD 7660652 (19200) (See Fig 12, Item 6 for Initial Listing)		1									14	6
N	P-F-			5305-978-9353	SCREW, CAP, SOCKET HEAD STL, CD PL, NO 10 24UNC-3A, 3/8 L MS16997-43 (96906) (See Fig 12, Item 7 for Allowances)	EA	2	REF	REF	REF	REF	REF	REF		REF	14	7
N	X1--				CLAMP 7652718 (19200) (See Fig 12, Item 8 for Initial Listing)		1									14	8
N	P-F-			53065-978-9353	SCREW, CAP, SOCKET HEAD STL, CD PL, NO 10 24UNC-3A, 3/8 L MS16997-43 (96906) (See Fig 12, Item 7 for Allowances)	EA	2	REF	REF	REF	REF	REF	REF		REF	14	9

C	P-F-	5340-679-9993	TIE ROD TENSIONING, THREADED END CRES 5/16 HEX, 24UNF-2A RH THD, ONE END, 24UNF-2A LH THD, OTHER END, 3-5/16 L 8270685 (19200) (See Fig 12, Item 11 for Allowances)	EA	1	REF	REF	REF	REF	REF	REF	REF	14	10
C	P-F-	1240-346-8189	RETAINER 8201866 (19200) (See Fig 12, Item 12 for Allowances)	EA	2	REF	REF	REF	REF	REF	REF	REF	14	11
C	P-F-	1240346-8189	RETAINER (See Fig 12, Item 12 for Allowances)	EA	2	REF	REF	REF	REF	REF	REF	REF	14	12
C	P-F-	5315597-0617	PIN, GROOVED, HEADLESS CRES 0.957 L 8201867 (19200) (See Fig 12, Item 14 for Allowances)	EA	2	REF	REF	REF	REF	REF	REF	REF	14	13
N	X1-		LEVER - 8201871 (19200) (See Fig 12, Item 15 for Initial Listing)		1								14	14
N	X1 -		SPRING 8201868 (19200) (See Fig 12, Item 16 for Initial Listing)		1								14	15
N	X1 - -		CLAMP 7687323 (19200) (See Fig 12, Item 17 for Initial Listing)		1								14	16

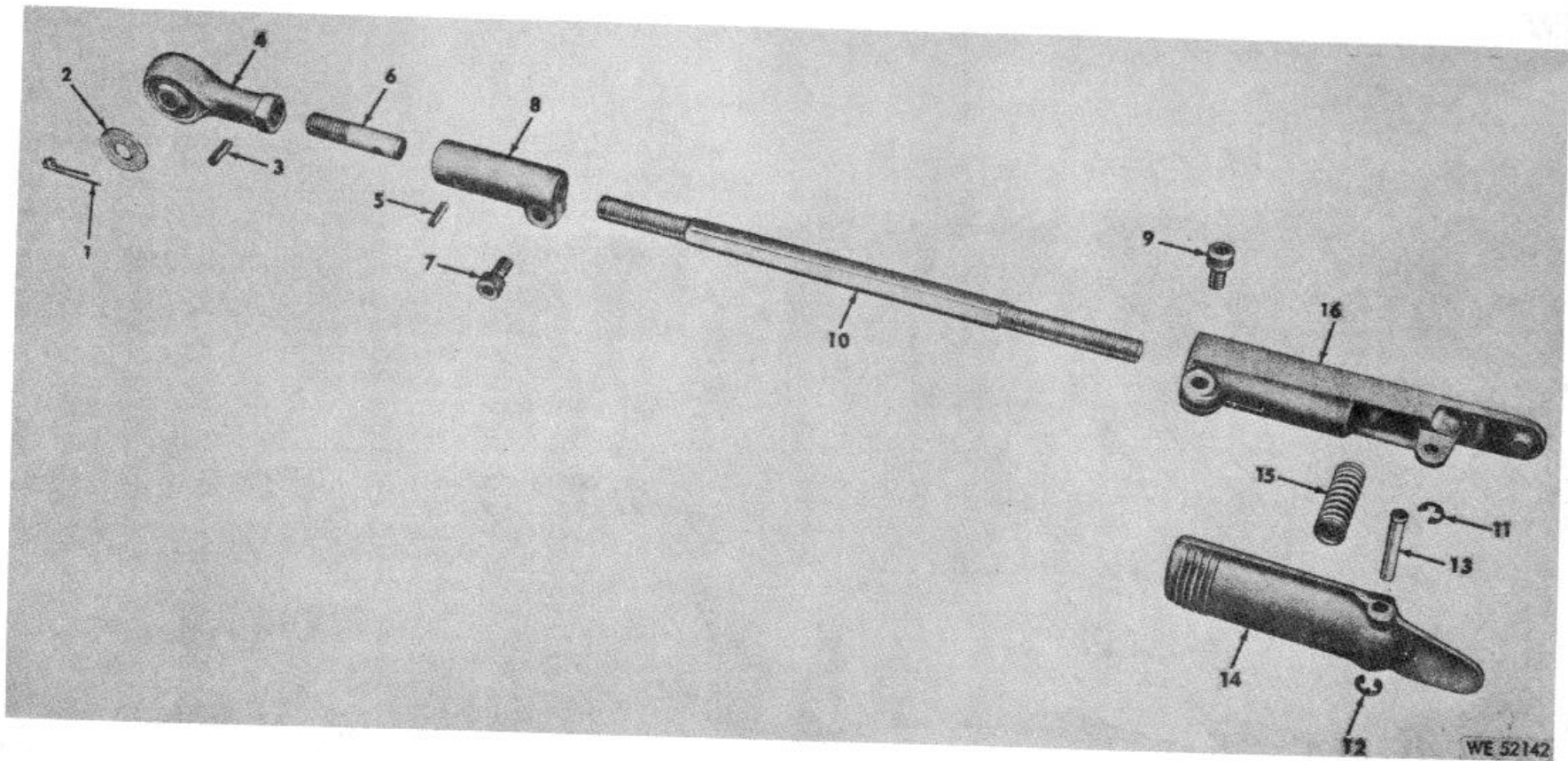


Figure 14. Link assembly 8565380.

**Section IV. INDEX-FEDERAL STOCK NUMBER CROSS-REFERENCED TO FIGURE AND ITEM NUMBER**

STOCK NUMBER	FIGURE NO.	ITEM NO.	STOCK NUMBER	FIGURE NO.	ITEM NO.	
1240-346-8189	13	7	5305-978-9353	12	9	
1240-346-8189	13	8	5305-978-9363	14	7	
1240-346-8189	12	12	5305-978-9363	14	9	
124(-346-8189	12	13	5305-978-9363	7	5	
1240-346-8189	14	11	5305-978-9354	7	4	
1240-346-8189	14	12	5305-978-9369	4	18	
1240-346-8203	3	16	5305-978-9374	10	8	
1240-346-8203	3	17	5306-638-7732	12	1	
1240-346-8216	9	23	5307-924-7666	13	17	
1240-346-8218	10	8	5310-013-1074	9	2	
1240-346-8740	3	9	6310-527-4508	9	18	
1240-464-4792	3	4	5310-809-4058	14	2	
1240-522-9966	9	22	5310-933-8119	10	4	
1240-535-6922	9	8	5310-933-8120	13	16	
1240-535-6925	3	19	5310-933-8120	18	18	
1240-635-9618	4	3	5310-933-8121	12	2	
1240-547-4617	7	19	5315-187-3228	10	26	
1240-692-1526	6	12	5316-597-0617	12	14	
1240-692-1527	5	10	5315-597-0617	13	9	
1240-692-1528	5	8	5315-597-0617	14	IS	
1240-692-1530	5	4	5315-721-4995	4	16	
1240-692-1530	5	6	6315-822-1180	3	15	
1240-692-1631	6	2	5315-822-1180	10	80	
1240-692-1532	6	4	5315-822-1180	9	20	
1240-692-1533	6	2	5315-839-2325	14	1	
1240-692-1535	8	10	5330-599-6696	7	7	
1240-692-1636	8	12	5330-599-6697	9	17	
1240-692-1540	8	14	5330-599-6697	10	29	
1240-692-1541	8	7	5330-692-1525	10	20	
1240-692-1545	11	4	5330-692-1525	9	11	
1240-767-6400	10	12	5340-505-5301	5	6	
240-767-6402	4	4	5340-514-2783	12	10	
1240-795-4753	7	9	5340-530-4935	9	9	
1240-818-2741	8	6	5340-535-6924	3	18	
1240-855-5914	9	3	5340-579-9993	12	11	
1240-901-8668	8	5	5340-579-9993	14	10	
2640-060-3543	3	2	5340-598-3442	13	19	
2640-114-109,	3	3	5340-664-0503	9	19	
2640-222-4525	3	1	5340-664-4642	10	22	
3110-173-5077	12	4	5340-664-4642	9	14	
3110-173-5077	14	4	5340-664 4642	5	1	
3110-752-7776	9	15	5340-664-4643	8	9	
3110-752-7776	10	24	5340-664-4644	8	3	
3110-752-7776	10	27	5340-664-642	6	1	
4931-795-5405	7	8	5340-795-5406	7	15	
5305-054-6665	9	1	7690-877-7156	3	21	
5305-057-1632	4	1				
5305-057-4593	13	12				
5305-057-4593	13		15 REFERENCE	MFR.	FIGURE	ITEM
5305-057-4593	13		NO.	CODE	NO.	NO.
5305-081-2651	10	21	MS16555-27	96906	3	15
5305-282-7649	7	16	MS16562-220	96906	12	3
5305-551-0156	7	17	MS16562-221	96906	12	5
5305-638-8693	10	6	MS16624-1031	96906	7	2
5305-638-8693	10	5	MS16996-9	96906	1S	10
5305-639-4321	4	2	MS16997-11	96906	9	4
6305-724-3439	7	18	MS16997-19	96906	9	12
5305-753-4187	11	3	MS16997-20	96906	3	5
5305-764-2966	3	7	MS16997-31	96906	4	18
5305-765-4257	11	1	MS16997-32	96906	7	1
5305-770-2533	9	21	MS16997-36	96906	10	8
5305-978-9347	10	18	MS16997-43	96906	7	5
5305-978-9347	9	12	MS16997-43	96906	12	7
5305-978-9348	3	5	MS16997-44	96906	7	4
5305-978-9353	12	7	MS20813-1	96906	8	1

<b>Reference No.</b>	<b>Mfg Code CODE</b>	<b>Fig. No. No.</b>	<b>Item No. No./</b>				
MS24665-132	96906	14	1	8270609	19200	5	4
MS24692-30	96906	10	25	8270610	19200	5	2
MS27183-10	96906	14	2	8270611	19200	6	4
MS35338-135	96906	9	6	8270612	19200	6	2
MS35338-137	96906	10	4	8270613	19200	11	5
MS35338-138	96906	13	13	8270614	19200	8	1
MS35338-139	96906	12	2	8270615	19200	8	10
MS35338-72	96906	9	2	8270616	19200	8	12
MS35691-B15	96906	13	6	8270617	19200	8	14
MS51021-31	96906	7	17	8270618	19200	8	7
MS51029-28	96906	11	3	8270624	19200	3	10
MS51031-33	96906	7	18	8270630	19200	8	15
MS51038-15	96906	10	21	8270631	19200	3	14
MS51038-19	96906	4	1	8270632	19200	5	13
MS51377-2	96906	3	2	8270633	19200	6	5
MS51607-1	96906	3	3	8270636	19200	4	3
MS51922-6	96906	13	1	8270639	19200	7	9
MS51937-1	96906	13	19	8270640	19200	9	8
MS61938-5	96906	4	5	8270641	19200	9	13
MS51957-12	96906	7	10	8270642	19200	9	16
MS51957-14	96906	10	10	8270643	19200	10	19
MS51957-83	96906	3	11	8270644	19200	10	23
MS51957-40	96906	9	1	8270645	19200	9	7
MS51959-13	96906	9	21	8270646	19200	10	28
MS51959-2	96906	3	7	8270647	19200	7	22
MS51959-43	96906	11	1	8270649	19200	4	19
MS51964-53	96906	10	17	8270650	19200	4	18
MS9105-57	96906	4	16	8270653	19200	3	6
10516321	19200	13	18	8270654	19200	4	12
10516567	19200	3	4	8270656	19200	9	3
426887	96906	3	13	8270657	19200	9	18
502976	21450	10	1	8270658	19200	4	10
540883	21450	7	16	8270659	19200	11	4
583130	21450	7	11	8270660	19200	10	7
589928	21450	4	15	8270661	19200	10	2
712017	21450	12	4	8270662	19200	8	3
7652716	19200	9	11	8270663	19200	8	4
7652718	19200	12	8	8270664	19200	8	8
7659440	19200	3	21	8270665	19200	8	9
7660650	19200	3	8	8270666	19200	8	11
7660652	19200	12	6	8270667	19200	8	13
7674678	19200	4	7	8270669	19200	5	1
7674684	19200	11	2	8270670	19200	6	3
7687314	19200	9	22	8270671	19200	6	11
7687316	19200	4	14	8270672	19200	5	9
7687317	19200	9	17	8270673	19200	5	7
7687318	19200	7	7	8270674	19200	5	6
7687319	19200	10	15	8270675	19200	5	3
7687320	19200	10	13	8270676	19200	3	18
7687322	19200	12	10	8270678	19200	4	2
7687323	19200	12	17	8270679	19200	4	8
8201855	19200	10	14	8270681	19200	4	6
8201862	19200	12	1	8270682	19200	4	9
8201866	19200	12	12	8270683	19200	3	19
8201867	19200	12	14	8270684	19200	11	6
8201868	19200	12	16	8270685	19200	12	11
8201871	19200	12	15	8270687	19200	10	12
8201896	19200	10	5	8270688	19200	9	16
8270322	19200	7	13	8270689	19200	7	8
8270323	19200	7	12	8270690	19200	7	15
8270602	19200	9	10	8270691	19200	9	19
8270604	19200	3	9	8270692	19200	9	6
8270605	19200	4	11	8270693	19200	9	9
8270606	19200	5	12	8270694	19200	10	26
8270607	19200	5	10	8270695	19200	10	11
8270608	19200	6	8	8270699	19200	7	3

8270700	19200	3	12	8567562	19200	9	23
8270704	19200	11	7	8567567	19200	10	8
8270705	19200	7	6	8585225	19200	10	9
8270708	19200	3	20	8585228	19200	7	19
8274652	19200	4	4	8619553	19200	13	5
8293430	19200	7	21	8619554	19200	13	17
8293434	19200	8	6	8619555	19200	13	2
8665261	19200	7	20	8619556	19200	13	4
8565600	19200	7	14	8635335	19200	13	3
8565601	19200	8	5	9400795	19200	4	17
8567526	19200	3	16				

By Order of the Secretary of the Army:

Official:

KENNETH G. WICKHAM,  
*Major General, United States Army,  
The Adjutant General.*

W. C. WESTMORELAND,  
*General, United States Army,  
Chief of Staff.*

DISTRIBUTION:

To be distributed in accordance with DA Form 12-41 (qty rqr Block No. 76), Direct and General Support requirements for Periscope.

RECOMMENDED CHANGES TO EQUIPMENT TECHNICAL PUBLICATIONS



THEN... JOT DOWN THE DOPE ABOUT IT ON THIS FORM, CAREFULLY TEAR IT OUT, FOLD IT AND DROP IT IN THE MAIL!

**SOMETHING WRONG WITH THIS PUBLICATION?**

FROM: (PRINT YOUR UNIT'S COMPLETE ADDRESS)

DATE SENT

PUBLICATION NUMBER

PUBLICATION DATE

PUBLICATION TITLE

BE EXACT... PIN-POINT WHERE IT IS

PAGE NO.

PARA-GRAPH

FIGURE NO.

TABLE NO.

IN THIS SPACE TELL WHAT IS WRONG AND WHAT SHOULD BE DONE ABOUT IT:

TEAR ALONG PERFORATED LINE

PRINTED NAME, GRADE OR TITLE, AND TELEPHONE NUMBER

SIGN HERE:

DA FORM 2028-2  
1 JUL 79

PREVIOUS EDITIONS ARE OBSOLETE.

P.S.—IF YOUR OUTFIT WANTS TO KNOW ABOUT YOUR RECOMMENDATION MAKE A CARBON COPY OF THIS AND GIVE IT TO YOUR HEADQUARTERS.



**PIN: 026559-000**